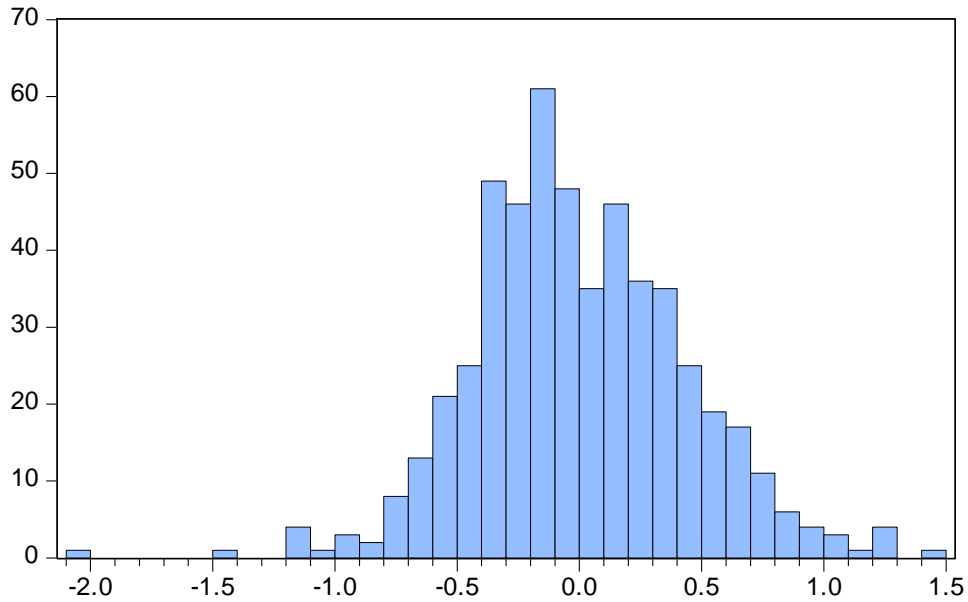


Aula T22 – Teoria assintótica

a) Histograma dos resíduos \hat{u} do modelo

$$\log(\text{wage}) = \beta_0 + \beta_1 \text{educ} + \beta_2 \text{exper} + \beta_3 \text{tenure} + u$$



b) Histograma dos resíduos \hat{u} do modelo

$$\text{wage} = \beta_0 + \beta_1 \text{educ} + \beta_2 \text{exper} + \beta_3 \text{tenure} + u$$

