



Welcome

to the **Université** de Strasbourg

International welcome guide | English version



# Using this guide

Specially designed for international students, this guide will accompany you from the first steps of your admission until your arrival in Strasbourg. It contains both administrative (admission, enrolment) and general information, about the University (campuses, student life) and the city of Strasbourg (housing, transport).

Whether you are coming within an exchange programme or as a regular student (non-exchange), everything you need to know is here!

## Contents

<b>Welcome to the Université de Strasbourg</b>	<b>3</b>
Why choose Strasbourg?	3
The Université de Strasbourg	3
<b>Education and admission</b>	<b>5</b>
Academics	5
Regular admission	6
Exchange students	9
<b>Life as a University student</b>	<b>12</b>
Your campuses	12
Learning resources	12
Enjoying university life	13
<b>Strasbourg how-to guide</b>	<b>16</b>
Preparing your arrival	16
Your health	18
Finance	19
<b>Support on arrival</b>	<b>22</b>
The International University House	22
September events	22
Other welcome services	23
<b>Contacts</b>	<b>23</b>

Welcome to

the Université de Strasbourg

## Why choose Strasbourg?

→ **For a historical city** that has been at the heart of commercial and cultural exchanges for centuries. The history of Strasbourg is illustrated by its rich and well-preserved architectural heritage, its old buildings and paved alleys. In 1988, the "Great Island" of Strasbourg, in other words the entire city-centre, was listed by UNESCO as World Heritage.

→ **For its dynamism:** only a few cities have managed to combine tradition and modernity as skilfully as Strasbourg. Today, initiatives are flourishing. The city grows and evolves, and yet never turns its back on its historical, multicultural and unique identity.

→ **For a city of many cultures,** due both to its history and geographical position. Strasbourg is one of Europe's most attractive cities.

→ **For easy living.** Strasbourg is a pioneer city in terms of respect for the environment, and a very pleasant place to live in. A friendly city, it boasts France's largest and most widespread tramway network. Along with 650km of cycle paths, Strasbourg is the city of bicycles, trams and pedestrians, all day and night.

→ **To transcend borders:** nowadays only the Rhine separates Strasbourg from Germany. A pioneer in cross-border cooperation, Strasbourg is at the heart of the Eurodistrict of Strasbourg-Ortenau. The latter promotes Franco-German objectives in multiple fields, such as transport, urban planning, culture or health.

→ **For a European capital,** seat of the Council of Europe, the European Parliament and Court of Human Rights. Strasbourg boasts the headquarters of many other European organisations including Eurocorps, the European Pharmacopeia, or Arte, the Franco-German television channel.

## The Université de Strasbourg

### 5 centuries of excellence

Located in the heart of Europe, the Université de Strasbourg is heir to a great tradition born of the humanism of the 16<sup>th</sup> century. To put it in numbers, the university represents:

→ **52,000 students each year, of which 1 out of 5 is from abroad**

→ **5,000 teachers, researchers and staff**

→ **35 faculties, schools, institutes**

A great university then, driven by its active involvement in virtually every discipline comprising the current body of knowledge:

→ **Arts, Literature, Languages**

→ **Law, Economics, Management, Political and Social sciences**

→ **Social sciences and Humanities**

→ **Science and Technology**

→ **Health**

The excellence of the Université de Strasbourg is recognised on a national and international level by the award of the Excellence Initiative label (IdEx).

## Europe in Strasbourg, is also...

- **the World forum for democracy** (in November),
- **the Open Day of the European Parliament** and celebrations for the month of Europe in May,
- **the European Youth Event (EYE)**, every other year at the European Parliament,
- **and all year long:** visits, conferences, and the opportunity to attend parliamentary sessions!

↓ ↓  
"Great Island" listed by UNESCO as **World Heritage**

↓ ↓  
Strasbourg, **European capital**

↓ ↓  
**18 Nobel Prize winners** with 3 still in activity

↓ ↓  
More than **700 partner institutions** in the world



## A quest for innovation

Its multidisciplinary nature makes it a centre of excellence in numerous domains such as biology, biotechnology, medicine, chemistry, material physics, and space science. The Université de Strasbourg also actively participates in the development of Social sciences and Humanities, notably through the activities of the Maison Interuniversitaire des Science de l'Homme – Alsace.

### → 71 research units

The University's international partnerships along with its humanitarian, intellectual, and scientific potential, have contributed to fuelling the greatest of ambitions on an international scale.

## Active in many partnerships

The Université de Strasbourg has developed strong European and international ties and offers exchange programmes with countless establishments around the world:

- **More than 450 Erasmus+ partners in Europe and 285 in the rest of the world**
- **Over 50 international partnership programmes**
- **Founding member of Eucor – The European Campus and the LERU (League of European Research Universities)**
- **Coordinator of the European Partnership for an Innovative Campus Unifying Regions | EPICUR**
- **Member of international academic consortia: the Franco-German University, Utrecht Network, Academic Consortium 21**

## Eucor – The European Campus

As member of the European Campus, the Université de Strasbourg students have the possibility of studying freely at the **Swiss** (Basel), **German** (Freiburg, Karlsruhe Institute of Technology) and **French** (Haute-Alsace) partner universities without having to pay additional enrolment fees.

More information: [eucor-uni.org](https://eucor-uni.org)



Central campus



Seat of the European Parliament

# Education

# and admission

## Academics

The academic year is divided into two semesters:

- ◆ 1<sup>st</sup> semester: from September to January
- ◆ 2<sup>nd</sup> semester: from January to May

The academic calendar online: [unistra.fr](https://unistra.fr) > Formation > Admission, inscription et scolarité

## Academic programmes

The Université de Strasbourg offers a broad range of courses covering a variety of academic disciplines.

You can check our academic programmes and courses on the website [unistra.fr](https://unistra.fr) > Formation

There are three principal educational degrees: bachelors (Licence, 3 years), masters (Master, 2 years) and PhD (Doctorat, 3 years).

If you need detailed information about a profession, a course or a choice of studies you can contact the Espace Avenir, the university service for career information, guidance and counselling (see p. 24).

## Tuition fees (2019)

### → Non-exchange students

Tuition fees vary depending on the diploma sought. You pay these fees online (in one or three payments) at the end of the administrative enrolment process (see p. 8), which is renewed at the beginning of each academic year.

To learn more: [unistra.fr](https://unistra.fr) > Formation > Admission, inscription et scolarité > Inscription à l'Université > Droits d'inscription

- ◆ Licence Degree / Professional Licence / DEUST / DUT / 3 first years of medical studies, pharmacy and dental surgery / DU at the Licence level (additional fees): **EUR 170**
- ◆ Masters / over the 3<sup>rd</sup> year of medical studies, pharmacy and dental surgery / DU at the Master's level (additional fees) / Masters degree in teaching and preparation for the aggregation: **EUR 243**
- ◆ Engineering diploma: **EUR 601**
- ◆ PhD, Authorization to direct research: **EUR 380**

### → Exchange students

If you are coming to the Université de Strasbourg as part of an exchange programme (Erasmus+, Eucor – The European Campus, MAUI, AEN, BCI, REARI-RJ) or inter-university agreement, you can benefit from special conditions. In some cases, you will be exempt from tuition fees: make enquiries before your departure, at your home university international relations office. As an exchange student, you are exempted from paying the CVEC (Contribution Vie Etudiante et de Campus – Student and Campus Life Contribution). However, you should register and load the certificate of exemption to complete your administrative registration.

[cvec.etudiant.gouv.fr](https://cvec.etudiant.gouv.fr)

## Marks and exams

The French marking system is based on a numbered scale from 0 to 20 (with 20 being the highest). An average of 10/20 is usually necessary to pass a course. 12 is usually a satisfying mark, and few students manage to maintain a yearly average of 16 (considered a very good mark) or above. Validation requirements of courses depend on your curriculum, school or institute.

Depending on your department, examination will be organised differently: either as continuous assessment (exams and tests are organised all year or semester long), or with two examination sessions, one at the end of each semester.

## ECTS credits

The European Credit Transfer and accumulation System (ECTS) is used all over the European Union. Each course is worth a certain number of credits. The ECTS facilitates the recognition of international exchanges.

- ◆ a semester corresponds to 30 ECTS credits
- ◆ a French Licence degree (3 years, or 6 semesters) is equivalent to 180 ECTS credits

## Regular admission or exchange student?

Regular admission is for those wishing to register for the university as non-exchange students, through regular procedures. Exchange students, however, are taking part in an exchange programme or inter-university agreement between their home university and the Université de Strasbourg.

### Academic calendar

[unistra.fr](https://unistra.fr) > Formation > Admission, inscription et scolarité

### Academic programmes and courses

[unistra.fr](https://unistra.fr) > Formation

### Espace Avenir

the university service for career information, guidance and counselling (p.24)

## Regular admission

You want to study at the Université de Strasbourg? The steps you need to follow are right below, and they are detailed in the next pages:

### 1 Choosing a study programme



### 2 Checking the admission requirements



### 3 Applying



### 4 If you are accepted: applying for a student visa



### 5 Pay Student and Campus Life Contribution (CVEC)



### 6 Administrative enrolment



### 7 Educational enrolment



### 8 Applying for a student residence permit

## 1 Choosing a study programme

The Université de Strasbourg offers an exceptional diversity of programmes that cover all areas of education (Arts, Literature, Languages; Law, Economics, Management, Political and Social sciences; Social sciences and Humanities; Science and Technology; Health).

You can check our academic programmes and courses on the website [unistra.fr](https://unistra.fr) > Formation

## 2 Checking the admission requirements

Admission requirements depend on the year of study you wish to apply to (1<sup>st</sup> year of Bachelors (Licence) degree or higher level), your nationality and current residence. The following tables provide you with all the information you need in order to apply.

Some departments have their own admission procedure: check their webpages [unistra.fr](https://unistra.fr) > Formation > Facultés, Écoles, Instituts

Be careful with the deadlines (some depend on the country you come from) and start making enquiries about procedures as early as possible: a year is often needed before departing.

## 3 Applying

Once you know which admission procedure corresponds to your situation you can start applying. You will find all the information in the following tables.



## ADMISSION INTO 1<sup>ST</sup> YEAR OF LICENCE

For admission into the first year of Licence (L1), you must present a diploma of high school graduation. You can apply even if you are currently preparing this diploma.

For whom?	What should I do?	How should I do it?	When?
<b>French Baccalauréat Europeans</b>	Enter your academic preferences online into the <b>Parcoursup website</b>	The complete procedure is done online at <a href="https://parcoursup.fr">parcoursup.fr</a>	Mid-January to mid-March
<b>Candidates living in France (non-Europeans)</b>	Fill out a request for prior admission (demande d'admission préalable - DAP) form by completing the <b>"dossier vert"</b> (green file)	Download and fill out the "dossier vert" (green file) of the DAP at: <a href="https://enseignementsup-recherche.gouv.fr">enseignementsup-recherche.gouv.fr</a> Applications must be submitted to the university of 1 <sup>st</sup> choice.	Mid-November to mid-January
<b>Nationals from countries using the "Etudes en France" procedure* (not living in France)</b>	Fill out a request for prior admission (demande d'admission préalable - DAP) form by completing the <b>"dossier blanc"</b> (white file)	Fill out the "dossier blanc" (white file) online via the Espace Campus France of your country: <a href="https://campusfrance.org">"name of the country". campusfrance.org</a> (e.g.: <a href="https://algerie.campusfrance.org">algerie.campusfrance.org</a> )	Mid-November to mid-January
<b>Candidates from other countries (not living in France)</b>	Fill out a request for prior admission (demande d'admission préalable - DAP) form by completing the <b>"dossier blanc"</b> (white file)	Download and fill out the "dossier blanc" (white file) of the DAP at: <a href="https://enseignementsup-recherche.gouv.fr">enseignementsup-recherche.gouv.fr</a> Applications must be submitted to the French embassy of your country of residence.	Mid-November to mid-January

## ADMISSION INTO 2<sup>ND</sup> OR 3<sup>RD</sup> YEAR BACHELORS (LICENCE) AND MASTERS 1 OR 2

For whom?	What should I do?	How should I do it?	When?
<b>Nationals from Campus France countries* (not living in France)</b>	Fill out a <b>"hors DAP"</b> procedure form online	Via the Espace Campus France of your country: <a href="https://campusfrance.org">"name of the country". campusfrance.org</a> (e.g.: <a href="https://algerie.campusfrance.org">algerie.campusfrance.org</a> )	Depending on your country – check on your Espace Campus France
<b>Other candidates</b>	Validate your courses, experience or skills through a <b>VAPP application</b> (validation des études, expériences professionnelles ou acquis personnels - VAPP)	Log on to the pre-application portal: <a href="https://ecandidat.unistra.fr">ecandidat.unistra.fr</a>	From March on (depending on study programmes and departments)

\*\*\*NOTE: The Université de Strasbourg is connected to the Campus France Agency. In 2016, the countries affected by this procedure are the following: Algeria, Argentina, Benin, Brazil, Burkina Faso, Burundi, Cameroon, Chile, China, Colombia, Comoros, Congo (Brazzaville), Côte d'Ivoire, Djibouti, Egypt, Gabon, Guinea, Haiti, India, Indonesia, Iran, Japan, Lebanon, Madagascar, Mali, Morocco, Mauritania, Mauritius, Mexico, Peru, Republic of the Congo, Russia, Senegal, Singapore, South Korea, Taiwan, Togo, Tunisia, Turkey, USA, Vietnam.

### 4 If you are accepted: applying for a student visa

The conditions on entry to France for long-term studies are regulated and differ from those of a leisure trip. If you have completed the admission procedures and received a positive response, you can proceed to apply for a student visa:

- ♦ **European candidates:** you do not need a visa.
- ♦ **Campus France procedure:** you can apply online, via your Espace Campus France.
- ♦ **Candidates living in France:** if you already hold a residence permit (resident card, residence permit) you do not need to ask for a visa.
- ♦ **Other candidates:** you have to make an application to get a student visa at the embassy or consulate of your country of residence.

### 5 Pay Student and Campus Life Contribution (CVEC)

This fee is EUR 90 and is compulsory for regular admission students. Students in exchange programmes, scholarship entries and refugees are exempt. They must nevertheless request an exemption certificate on the site [cvec.etudiant.gouv.fr](https://cvec.etudiant.gouv.fr) to register at the University. [cvec.etudiant.gouv.fr](https://cvec.etudiant.gouv.fr)





## French language proficiency test (Test de Connaissance du Français - TCF)

As part of the request for prior admission (DAP), you have to take a French language comprehension test. The cost of this test is EUR 65. It can be taken in your country of residence as well as at the Université de Strasbourg. You are exempt from the TCF if you:

- are a national of a State where French is the official language or if your high school education was mostly in French.
- studied in a French bilingual section (featured on a list drawn up by the French Ministry of Education and Foreign Affairs)
- hold the advanced French proficiency diploma (DALF C1 and C2), the French proficiency certificate (DELFB2) or another recognised language test of an equivalent level.

For more information: [ciep.fr/tcf-dap](https://ciep.fr/tcf-dap)

### 6 Administrative enrolment

Administrative enrolment (inscription administrative) gives you student status on arrival: you will be given your student card and enrolment certificate (certificat de scolarité), and will be able to register with Social Security (see p. 19).

You can enrol online ([unistra.fr](https://unistra.fr) > Formation > Inscription et scolarité) or directly with the tuition department of your curriculum. Check with your school or faculty: [unistra.fr](https://unistra.fr) > Formation > Facultés, Ecoles, Instituts

### 7 Educational enrolment

Your administrative enrolment must be completed by an educational enrolment (inscription pédagogique), which validates your participation in lectures (cours magistraux or CM), tutorials (travaux dirigés or TD), practical work (travaux pratiques or TP) and exams, and your free choices of courses or languages. Educational enrolment is organised by your department administration, often at precise dates and times.

Make enquiries on the weeks before classes begin, at your department administration office or its website: [unistra.fr](https://unistra.fr) > Formation > Facultés, Ecoles, Instituts

### 8 Applying for a student residence permit

You can apply for a student residence permit only once your administrative enrolment is validated. You are advised to start the process as soon as you arrive in Strasbourg.

- **European candidates:** you do not need to hold a residence permit.
- **Nationals of other countries:** you must apply for a student visa (long-stay visa valid as a residence permit, VLS-TS) and have it validated within three months of arriving in France (EUR 60 in 2019). From September to the end of November, you will be able to apply on campus at the SVU term-start Agora (see page 23). Then you will have to go to the préfecture. To obtain this permit, you must submit: your passport, an enrolment certificate, proof of financial resources for one year and proof of residential address (electricity or telephone bill, accommodation certificate, etc.).

- **Note:** some students have a one-year visa (long-stay visa valid as a residence permit, VLS-TS) and do not need a residence permit and must validate the visa on the OFII website (French Office of Immigration and Integration).

For more information, visit [bas-rhin.pref.gouv.fr](https://bas-rhin.pref.gouv.fr) > Démarches administratives > Etranger en France

## Exchange students

### Eucor – The European Campus students

Since 1989, Eucor – The European Campus brings together five frontier universities. The Université de Strasbourg students are consequently part of this tri-national campus at the heart of Europe. It comprises:

- **Germany:** Albert-Ludwigs-Universität Freiburg, Karlsruher Institut für Technologie
- **Switzerland:** Universität Basel
- **France:** Université de Strasbourg, Université de Haute-Alsace

There are several ways of enhancing your course of study through this excellent partnership: [campuseuropeen.unistra.fr](https://campuseuropeen.unistra.fr)

#### → Have bi/tri-national education

The European Campus universities offer several joint and cross-border programmes, in multiple domains.

Within these programmes, you can participate in an exchange at one of the partner universities for at least one semester. You will be able to take one or several classes and modules offered by the Université de Strasbourg or jointly by several European Campus universities. You will also be able to obtain joint diploma. How to proceed:

- 1- Enrol directly at your home university, under its own conditions.
- 2- If you wish to come and study in Strasbourg, contact the International Relations Department of the university ([campus-europeen-mobilite@unistra.fr](mailto:campus-europeen-mobilite@unistra.fr)) to fill out an administrative file.

#### → Designing your own course of study

As an European Campus student, you can, after approval from your Course director, attend an isolated conference or study a complete subsidiary course at any member university.

For your chosen courses to be taken into account in your transcript, consult the following site: [unistra.fr](https://unistra.fr) > International > Partir à l'international > Etudier sur un campus européen > Mobilité libre

#### → Study in Strasbourg for a semester or a year

Candidates must follow the same process as for exchange programmes (see the following section, "Exchange programmes").

[unistra.fr](https://unistra.fr) > International > Venir à Strasbourg > Etudiants en programme d'échange > De Basel, Freiburg, Karlsruhe, Haute-Alsace (Eucor – Le Campus européen > Mobilité libre  
Contact: [campus-europeen-mobilite@unistra.fr](mailto:campus-europeen-mobilite@unistra.fr)

## Exchange programmes

Over the years, the Université de Strasbourg has developed a very dense network of partnerships formalised through cooperation agreements. This international approach has made it possible for students from partner universities to complete part of their studies at the Université de Strasbourg within the framework of an exchange programme. These agreements, which are generally fixed for a specific discipline, offer students the guarantee of a mobility that is recognised and integrated into their curriculum.

- ♦ **In Europe:** Erasmus+ is the European mobility reference programme. It allows students from European partner universities to spend from 3 to 12 months in Strasbourg, while validating their studies at their home university.
- ♦ **Outside Europe:** thanks to agreements signed with over 285 partner institutions and members of four networks (AEN, MAUI, BCI, REARI-RJ), students from these universities can come and study at the Université de Strasbourg in the framework of a cooperation agreement.

### → First apply to your home university

- 1- Confirm with the International Relations Department of your home university that there exists a student exchange agreement with the Université de Strasbourg in your field of study, make enquiries about admission requirements.
- 2- Contact the person in charge of international exchanges for your field of study and decide on your course.
- 3- Submit a pre-selection application at your home university.

### → Then to the Université de Strasbourg

- 4- If you are selected by your home university, you can apply online at the Université de Strasbourg. The link will be sent to you after receiving the official nomination sent by your home university.
- 5- If you are accepted at the Université de Strasbourg, you must enrol at your home university.
- 6- When arriving in Strasbourg you will have to complete both an administrative and educational enrolment (see p. 9).

#### Note:

Most classes will be held in French. Thus, a B1 (even B2 for certain subjects) level in French is required for a period of study at the Université de Strasbourg within the framework of an exchange.



Law faculty, central campus

## Personalised services for exchange students



### → University housing

As an exchange student, you can apply for social housing at the International Relations Department of the Université de Strasbourg. All you have to do is to complete and send the request for accommodation form (demande de réservation de logement) when you fill out your online application. The rooms and studios are part of the proposed Crous university residences or the International University House (see p. 16). The number of places is limited.

Contact: [scensi@unistra.fr](mailto:scensi@unistra.fr)

### → French language training course

In order to facilitate the cultural and linguistic immersion for exchange students, the Université de Strasbourg offers a pre-entry host programme (mid-August).

The programme includes:

- ♦ an intensive French language course
- ♦ cultural activities (visit of the city and campus)
- ♦ accommodation in university housing

Students accepted by the Université de Strasbourg in an exchange programme to take courses in French (and who arrive in the first semester) and who can do so will be able to apply online and will receive an answer in June.

For more information contact [scensi@unistra.fr](mailto:scensi@unistra.fr)



### How to improve your French:

see p.12

Central campus



# Life as a University student

## Your campuses

The Université de Strasbourg is spread over several campuses. They can easily be reached and offer access to the city centre by using the tramways and buses.

The central campus of Esplanade is the largest and it is located close to Strasbourg city centre. Most central services are located there. It is currently going through a large restructuring plan which aims at making it more open and green. Projects are flourishing around this new park, rich with public and green spaces: buildings are undergoing restauration, the historical heritage is enhanced, and new constructions are rising up.

## Learning resources

The Université de Strasbourg provides a stimulating environment for studying, with plenty of space in the libraries, easy access to digital resources, and a wide range of extracurricular activities organised by over a hundred student organisations.

### → The Campus Pass

The Campus Pass is the University student card. It is given to all students upon enrolment. It serves various valuable purposes such as paying at the university restaurants and cafeterias, borrowing documents and books from libraries, using copiers and printers.

Learn more: [passcampus.fr](https://passcampus.fr)

## Work areas

### → Digital access

Nearly all of the university sites benefit from wireless coverage (Osiris Wi-Fi). The web portal Ernest (Environnement numérique et social de travail) provides members of the university community with numerous services: e-mail, enrolment, exam results, timetable, educational tools, news, etc.

To benefit from these services, log on to the portal [ernest.unistra.fr](https://ernest.unistra.fr) using the username and password provided with your Campus Pass.

### → Libraries

Set up all over the campuses, the 26 university libraries cover all subjects and domains. They provide access to over a million books, plenty of online resources, over 5,000 study seats, and numerous services. The National and university library of Strasbourg (Bibliothèque nationale et universitaire - BNU), 2<sup>nd</sup> biggest in France, is also open to students. Documents can be borrowed using the Campus Pass. Thanks to Eucor – The European Campus, the Strasbourg university community also has access to the libraries of 5 partner universities (see page 9).

The libraries website: [bu.unistra.fr](https://bu.unistra.fr)

## Improving your French

### Note:

The majority of courses at the Université de Strasbourg are taught in French. To study in the best possible conditions, a B1 (sometimes B2) level is highly recommended on your arrival. The International Institute for French Studies (IIEF) offers paid courses at all levels but the LanSAD FLE Area welcomes students from a B1 level. A minimum B1 level is required (or B2 depending on the educational unit chosen).

### → French courses at the LanSAD centre

"French as a foreign language" classes are provided, free of charge, for all students (regular and exchange students) who have at least a B1 level.

- ♦ **French course (Unité d'enseignement – UE):** you can choose a French course within your learning agreement or as an optional or language course. These "French as foreign language" (Français langue étrangère – FLE) courses are intended for students who need an exam mark to validate 3 ECTS credits. A minimum B1 level is required (or B2 depending on the educational unit chosen). Register on [ernest.unistra.fr](https://ernest.unistra.fr) at the beginning of the semester. The number of places is limited.
- ♦ **Language support (Programme d'accompagnement Linguistique – PAL):** this programme combines workshop attendance and self-study. If your home university allows you to obtain ECTS credits for French without taking examinations, a certificate of attendance may be obtained for a minimum 30-hour workload. The PAL is also open to students who wish to improve their French for personal reasons (no ECTS validation). Students must have at least an A2 level. Register for an obligatory orientation session (séance d'accueil) on [ernest.unistra.fr](https://ernest.unistra.fr).

- ♦ **TANDEM website:** helps you find French speaking partners who wish to learn your mother tongue. Register on the web portal Ernest (Environnement numérique et social de travail) [ernest.unistra.fr](http://ernest.unistra.fr)
- ♦ **RELAIS website:** a selection of useful websites for learning and practicing French (academic and everyday language), on [relais.unistra.fr](http://relais.unistra.fr)

### → The International Institute of French Studies (IIEF)

Located on the University campus, the International institute of French studies (Institut international d'études françaises – IIEF) offers all kinds of paid courses (University diplomas, from A1 level to C2): language, cultural, and professional among others. There is surely one for you!

Access to these courses is not automatic for students already enrolled at the university: it requires a separate enrolment at the IIEF: [iief.unistra.fr](http://iief.unistra.fr)

### → International University House

French courses are also available throughout the year.

### → Other useful links

- Alliance Française: [afstrasbourg.eu](http://afstrasbourg.eu)
- Université Populaire Européenne: [upe-alsace.fr](http://upe-alsace.fr)
- Centre International d'Études en Langues: [ciel-strasbourg.org](http://ciel-strasbourg.org)



### The cultural calendar

[unistra.fr](http://unistra.fr) > Agenda



More about the **Culture Card**  
[carte-culture.org](http://carte-culture.org)



### Over 50 sport activities

[sport.unistra.fr](http://sport.unistra.fr)

## Enjoying university life

### Culture

The Université de Strasbourg takes an active part in the cultural life of the region by offering multiple and varied opportunities: exhibitions, shows, seminars, debates, museum visits, and symposiums among others. In a spirit of co-constructing and respecting all points of view, it is committed to sharing the scientific and technical knowledge of all its disciplines.

If you do not want to miss a thing, check out the university calendar: [unistra.fr](http://unistra.fr) > Agenda

### → Culture Card

The Culture Card enables students to obtain preferential rates all year long, throughout Alsace:

- ♦ entry for EUR 6 to 46 festivals, concerts and show halls (including the National theatre of Strasbourg (TNS), the Opéra du Rhin or the concert hall La Laiterie)
- ♦ entry for EUR 5 in 7 cinemas
- ♦ free entry in 23 museums

Students from Eucor – The European Campus can also benefit from this card.

Find out more about the Culture Card on [carte-culture.org](http://carte-culture.org)

## Sports

You can enjoy a variety of sports at the university Sport Centre (service des sports). It offers over 60 physical and artistic activities, intended for students and adapted to your timetables: fitness classes, team, racket, combat, target or aquatic sports, gymnastics and dancing. The Sport Centre (service des sports) also organises day trips or weekends in the Vosges Mountains nearby: ski, snowboard, trekking or parachuting among others! You can register for these activities at the beginning of each semester.

The Sports Association (Association sportive – AS) also organises training and competitions (academic, regional and national) where you will be able to defend the colours of your department or of the Université de Strasbourg.

More information: [sport.unistra.fr](http://sport.unistra.fr)

## Moving it in Strasbourg

- ♦ **The best place to go jogging in Strasbourg?**  
The Orangerie Park, a favourite spot for runners of all ages!
- ♦ **Do not miss the Strasbourg Races**, in May: from 5km to marathon, there is a run for everyone! In October, there also is the La Strasbourgeoise race/walk, dedicated to raising money to fight breast cancer.
- ♦ **You like cycling better?** Join the Eucor Tour, 5 days of cycling between France, Germany and Switzerland.
- ♦ **For swimmers**, the various Strasbourg swimming pools (olympic, outdoor or roman baths style) offer a pass for all, at a reduced price for students.
- ♦ **As warmer weather approaches**, the central campus football field tends to become a key place for university matches.

## Community life

Numerous students associations and clubs enhance University life by regularly organising meetings, cultural events, parties or conferences. They can also provide information to newcomers, before your arrival or all year long.

Check out their websites or follow their facebook pages: [unistra.fr](http://unistra.fr) > Vie des Campus > Vie universitaire

## Trips and travel

Located in the heart of Europe, Strasbourg is an ideal starting point for travelling in France, Europe, and beyond.

- ♦ **By train:** trains departing from Strasbourg travel to all major French cities, but also to Germany, Luxembourg, Belgium or Switzerland. Thanks to the high-speed train (Train à grande vitesse – TGV) Strasbourg is connected to Paris in less than two hours. You can buy your tickets either at the train station or online ([sncf.com](https://www.sncf.com)). The Jeune 18-27 railcard allows you to get discounts on most journeys.
- ♦ **By plane:** you can reach several airports from Strasbourg (see p. 17). Low-cost flights will allow you to discover Europe and beyond at low prices.
- ♦ **By bus:** more and more bus companies are connecting Strasbourg to the other major cities of France and Europe. Journeys are usually longer than by train but prices are lower.
- ♦ **Car sharing:** an opportunity to travel cheaply and meet people. Nowadays, many websites allow drivers to be in touch with passengers.

## Not-to-be-missed in Strasbourg

- ♦ **Going on a bike ride** and ending up in Germany.
- ♦ **Warming yourself up** with a hot chocolate, in a typical Alsatian Winstub.
- ♦ **Enjoying your Christmas market** mulled wine, even before tourists arrive.
- ♦ **Crying, laughing and shivering** from emotion during a performance at the opera or theatre, for only EUR 6 with the culture card.
- ♦ **Strolling down a pedestrian alley** and discover a lively terrace.
- ♦ **Taking a night swim** in a (heated!) outdoor swimming pool, for the February festival of Strasbourg mon Amour.
- ♦ **Discovering the natural beauty** of the Vosges Mountains during a day-trip (only an hour away).
- ♦ **Having a brunch** on the rooftop terrace of the Museum of Modern Art
- ♦ **Admiring the flight of storks** while picnicking in the Orangerie park.
- ♦ **Coming early** for the Symphonie des Deux Rives, in June: a unique outdoor music evening.
- ♦ **Being around when the night falls** and the cathedral lights up, in summer.



University climbing wall



Central campus



# Strasbourg how-to guide

## Preparing your arrival

### Travelling to Strasbourg

#### → By train

The Strasbourg train station is located near the city centre and is served by three tramway lines. Regional, national, international and high-speed trains (Train à grande vitesse – TGV) serve this station.

#### → By plane

The Strasbourg-Entzheim international airport covers around thirty destinations. A shuttle train connects the airport to the central train station (9 minute ride). Other airports are easy to reach from Strasbourg:

- ♦ the EuroAirport Basel-Mulhouse-Freiburg, connected by a shuttle bus to St Louis where a Strasbourg-St Louis train runs;
- ♦ the Frankfurt airport, third in Europe, offers a service of bus shuttles to Strasbourg;
- ♦ Paris various international airports are only two hours away by TGV;
- ♦ the airports from Karlsruhe-Baden and Frankfurt-Hahn in Germany are located close to Strasbourg, but it is necessary to have a car to reach them (or you can try carsharing too, see p. 14).

### Finding accommodation

#### → University halls of residence

The Crous is the institution in charge of university housing in France. It offers student housing in Strasbourg, Illkirch and Mulhouse.

You can consult the accommodation offer via the site [trouverunlogement.lescrous.fr](https://trouverunlogement.lescrous.fr), and book them throughout the year. Places are limited, but all students can be eligible - priority is still given to scholarship students. So, whether you are French or an international student, scholarship or not, do not hesitate to apply.

The rooms, studios, and T1 offered are for students with limited budget. The levels of comfort vary: from the single room with bathroom, to the studio equipped with a kitchenette.

- ♦ **Regular students:** To be able to obtain accommodation in the year, you really need to think ahead and prepare a student social file (DSE) on the site [messervices.etudiant.gouv.fr](https://messervices.etudiant.gouv.fr). If you have any questions, please contact the «Accommodation» service of Crous de Strasbourg, at: [logement@crous-strasbourg.fr](mailto:logement@crous-strasbourg.fr).

Crous also has an offer of accommodation for short stays (varying from one night to one month). The offer is similar to that of a hotel, but for a small budget. You can check the availability of these accommodation offers and book them via the [bedandcrous.com](https://bedandcrous.com) website.

The Lokaviz.fr website is a classified ads platform for social housing providers, offering low budget housing throughout France. Rents and amenities are approved by Crous. Take a browse around if you have not found what you need elsewhere.

- ♦ **Exchange students:** you can submit a housing application (university residences or International University House) during your online application (see p. 10).
- ♦ **Students with scholarships** (from the French government or your country's Campus France): housing is assigned directly by Campus France under the terms of your scholarship agreement. [More information: trouverunlogement.lescrous.fr](https://trouverunlogement.lescrous.fr)

#### → Private rentals

### The International University House

The International university house is not only the University welcome desk (see p. 23): it is also a residence of 169 studios, intended in priority for international students (exchange or regular students) and researchers. It is managed by the association Amitel: [amitel.eu](https://amitel.eu)

Rent in private accommodation is more expensive than the Crous' campus housing. You can consider different possibilities: renting a studio, a small flat on your own, sharing a flat, or joining a private student residence.

Property agencies make propositions for private rentals, but ask for additional fees (usually a month's rent). Directly contacting the owner ("propriétaire", or "particulier") will be less expensive.

### Housing Aid

In France, students can benefit from financial housing aid (Aide personnalisée au logement – APL) from the Family allowances fund (Caisse d'allocations familiales – CAF). The amount varies according to your situation (personal income, housing size and type). You can start all the administrative procedure online as soon as you have found accommodation. You can also try an online simulation, to know if you are likely to benefit from this aid: [caf.fr](https://caf.fr)



### The Crous university residences

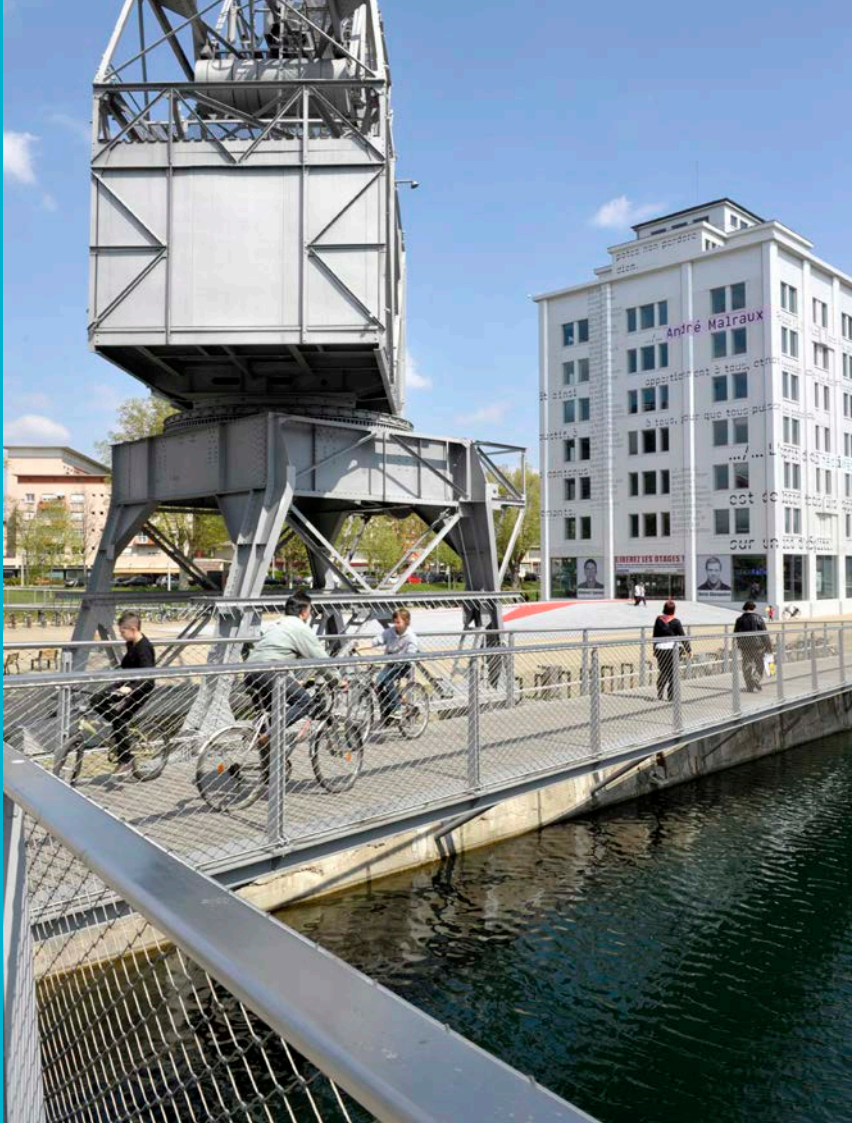
[logement@crous-strasbourg.fr](mailto:logement@crous-strasbourg.fr)



### The International university house

[info-logement@unistra.fr](mailto:info-logement@unistra.fr)





Strasbourg train station



## Student rental deposit

To apply for accommodation (university or private), you must have a guarantor: a solvent person residing in the European Union. If you have no one to contact you, and under certain conditions, you can benefit from the Visale device: the State vouchers for you, under certain conditions. It enables you to get a free deposit: [visale.fr](http://visale.fr)

### → Useful addresses and tips

- ◆ You can consult offers at the Agora (see p. 22). The University website also suggests several addresses:
  - ↳ [unistra.fr](http://unistra.fr) > Vie des Campus > Hébergement > Résidences privées
- ◆ The classified site of the social lessors, approved by the Crous: [lokaviz.fr](http://lokaviz.fr)
- ◆ Small ads websites:
  - [leboncoin.fr](http://leboncoin.fr)
  - [pap.fr](http://pap.fr)
- ◆ For sharing a flat ("colocation"):
  - [lacartedescolocs.fr](http://lacartedescolocs.fr)
  - [appartager.com](http://appartager.com)
- ◆ The association Adele, listing private student residences: [adele.org](http://adele.org)
- ◆ You can also consult the many Facebook groups for students in Strasbourg on [facebook.com](http://facebook.com)

### → Temporary accommodation

(for a couple of days or weeks when your arrive)

- ◆ Private house accommodation:
  - [roomlala.fr](http://roomlala.fr)
- ◆ Youth hostels:
  - [Auberge de Jeunesse des 2 Rives](http://Auberge de Jeunesse des 2 Rives)
  - [CIARUS](http://CIARUS)
- ◆ Crous short-term rental:
  - [bedandcrous.com](http://bedandcrous.com)

## Getting around in Strasbourg

### → Public transport

No need for a car to live in Strasbourg: public transports (bus and tramways) are very well developed and they are managed by the Strasbourg public transport company (Compagnie des Transports Strasbourgeois - CTS). All the campuses can be reached by buses or trams. In September, the CTS will hold a desk at the Agora (see p. 23) for you to make enquiries as well as your monthly or yearly subscriptions.

- ◆ Ticket cost: EUR 1.70
- ◆ Tickets per 10: EUR 13.20
- ◆ Monthly subscription: from EUR 2.40 to EUR 27.60 (-25 years old) or EUR 51.80 (+25 years old), depending on your income

CTS commercial shop

9 place Saint-Pierre-le-Vieux – Strasbourg

(tram station: Alt Winmàrik)

Monday to Friday 8.30am-7pm, Saturday 9am-5pm

↳ [cts-strasbourg.eu](http://cts-strasbourg.eu)

## → Cycling

With more than 650km of cycling routes, Strasbourg boasts the leading cycle network of France. Whether it is for everyday life, sport or leisure: in Strasbourg, the bike is King.

- ♦ **The Vélhop** are bicycles you can hire for short or long periods. This service is proposed by the city: [velhop.strasbourg.eu](https://velhop.strasbourg.eu)
- ♦ **Bicycle sales:** often organised at the beginning of the school year, sales ("bourses aux vélos") are good opportunities for buying second-hand bikes at low prices (or selling your own).

## → Driving in France

Your right to drive in France will vary according to where you obtained your driving licence, whether you hold a residence permit or not, and if agreements exist between France and your country.

For more information visit [bas-rhin.gouv.fr](https://bas-rhin.gouv.fr)

- ♦ **European Union driving licence:** you are allowed to use it in France freely.
- ♦ **Owners of a residence permit:** you have the right to drive with your national driving licence throughout the length of your studies.
- ♦ **Other cases:** you can drive in France for 1 year only, using your national driving licence (under conditions). After one year, you will have to change it for a French driving licence (if an agreement exists with your country) or take the practical driving-test again in France.

# Your health

## Social security

In France, you must pay for your own treatments, visits to the doctor, and medication. You are then partially reimbursed by Social security (Sécurité sociale). The balance has to be paid by you or can be reimbursed by additional health insurance.

However, your situation depends on your age, status and nationality and you are advised to make enquiries as soon as possible: [securite-sociale.fr](https://securite-sociale.fr) or [ameli.fr](https://ameli.fr)

- ♦ **European students:** Before departure, you have to apply for the European health insurance card from the social protection services of your country of origin (carte européenne d'assurance maladie - CEAM). It is free and valid for two years. Health costs will be borne by the health service of the country of origin which issued the CEAM.
- ♦ **Nationals from Quebec and Andorra:** You must apply for a certificate before your arrival in France (SE 401 - Q - 102 bis for Québec / SE 130-04 for Andorra) and register on the [ameli.fr](https://ameli.fr) website.
- ♦ **Other students:** You must apply for your affiliation to the French social security by registering on the website [etudiant-etranger.ameli.fr](https://etudiant-etranger.ameli.fr).

## Additional health insurance

The compulsory Social security system only reimburses a part of health expenses. Taking out additional health insurance (mutuelle complémentaire) is not compulsory, but it guarantees better reimbursements. You can take out additional health insurance.

## Healthcare

The University Health Service (service de santé universitaire) organises at least one preventive examination including a medical, psychological and social dimension in the first 3 years of higher education and proposes free medical consultations to students: sports medicine, vaccination, relaxation and stress management, prevention and civic aid - level 1 training, etc. It is also a centre for free information and H.I.V., hepatitis and sexually transmitted disease testing.

For the list of accessible consultations and more information: [sante.unistra.fr](https://sante.unistra.fr)



**Over 650 km of cycling routes**



**Strasbourg public transports:**  
[cts-strasbourg.eu](https://cts-strasbourg.eu)



**Free medical consultations**  
[sante.unistra.fr](https://sante.unistra.fr)

## Finance

### Budget

#### → Requirements

French law requires international non-exchange students to prove that they have a monthly minimum of EUR 615 in France without working. This can be proved by:

- ◆ a scholarship certificate
- ◆ guarantee by a creditworthy person in France
- ◆ an automatic standing order

#### → Estimated budget for the 1<sup>st</sup> month

The first month (on arrival) is always the most expensive. This estimated budget helps you anticipate the first month's costs.

- ◆ first rent: from EUR 200 to EUR 600 (unless you asked for the Visale device)
- ◆ accommodation guarantee deposit (1 month of rent, that you will get back at most 2 months after departing): from EUR 200 to EUR 600 (unless you asked for the Visale device)
- ◆ annual housing insurance: around EUR 50
- ◆ other utility charges (telephone, electricity, internet etc.): up to EUR 100
- ◆ additional health insurance cost (see p. 18): from EUR 70 to EUR 300
- ◆ enrolment fees (see p. 5): from EUR 170 to EUR 601
- ◆ other university-related costs (sport membership, books, etc.): EUR 50

## How much does it cost? (prices 2019)

Thanks to your student card (Campus Pass), you will often be able to benefit from preferential prices and discounts.

- |   |  |   |
|---|--|---|
| <ul style="list-style-type: none"> <li>◆ <b>A cinema ticket:</b> EUR 5 (culture card)</li> <li>◆ <b>A swimming pool entry:</b> from EUR 2.90</li> <li>◆ <b>An museum entry ticket:</b> free (culture card) or EUR 3.50</li> <li>◆ <b>Cultural programming of Crous:</b> free</li> <li>◆ <b>A meal at a university restaurant:</b> EUR 3.25</li> </ul> | <ul style="list-style-type: none"> <li>◆ <b>A sandwich:</b> from EUR 3 to EUR 5</li> <li>◆ <b>A croissant at the bakery:</b> EUR 0.80</li> <li>◆ <b>A coffee:</b> from EUR 0.50 to EUR 2</li> <li>◆ <b>A small beer:</b> around EUR 3</li> <li>◆ <b>A tarte flambée</b> (local speciality!): from EUR 6 to EUR 10</li> </ul> | <ul style="list-style-type: none"> <li>◆ <b>Monthly subscriptions:</b> <ul style="list-style-type: none"> <li>- mobile phone: from EUR 2 to EUR 30 (depending on the offers)</li> <li>- internet: from EUR 10 to EUR 30</li> <li>- transports: EUR 2.40 or EUR 27.60 (see p. 18)</li> </ul> </li> </ul> |
|---|--|---|

### Part-time work

Foreign students can work in France under certain conditions. This professional activity must be undertaken as secondary to studies, with a limit of an annual working time of 964 hours (60% of annual working time).

For more information visit [bas-rhin.gouv.fr](http://bas-rhin.gouv.fr)

- ◆ **European students:** you have the right to work in France during the course of your studies as long as you are enrolled in an establishment that entitles you to student Social security.
- ◆ **Algerian students:** you have to apply for a temporary work permit.
- ◆ **Other students:** your student residence permit or long-stay visa entitles you to work in France, throughout your studies.

### Financial Aid

#### → Housing Aid

As a student you can benefit from financial aid with your rent (Aide personnalisée au logement – APL) from the Family allowances fund (Caisse d'allocations familiales – CAF): see p. 17.

#### → Crous Aid

##### ◆ Grant based on social criteria

- For European students under 28 years old (others: under special conditions) whose parents (or legal guardians) have been French tax residents for at least two years.
- The grant amount depends on your situation. It is determined by the parents' taxable income, number of children, and the distance between their residence and the institution. It is paid monthly in ten instalments, from September to June. You can check if you are entitled to a scholarship and calculate its amount thanks to the simulator on:

[simulator.lescrous.fr](http://simulator.lescrous.fr)

- From 15 January to 15 May: apply online through the Social student record (Dossier Social Etudiant - DSE), then send the file and requested documents to the Crous.

Fill out the DSE on the website:  
[messervices.etudiant.gouv.fr](http://messervices.etudiant.gouv.fr)

##### ◆ Crous National Emergency Aid Fund

- For students up to 35 years old who find themselves in special difficult situations not included in the criteria for obtaining a scholarship (attested family breakdown or separation, resumption of studies, etc.).

More information:

[unistra.fr](http://unistra.fr) > Formation > Financer ses études

#### → Other grants

##### ◆ French government scholarships

- Recipients are nominated by the cultural sections of French embassies. The selection is based on specific projects that are part of cooperation programmes.
- Apply directly to the cultural service of the Embassy of France in your country of origin to obtain all the information necessary, prior to your departure and sufficiently in advance.

#### ◆ Eiffel Scholarships

These scholarships of the Ministry of Foreign Affairs are for foreign students who can justify an excellent academic record and who wish to pursue a Masters or PhD in France.

Find out more: [campusfrance.org](https://campusfrance.org)  
> Bourses et appels à candidatures

#### → Eucor – The European Campus Aid

If you are a Eucor – The European Campus student, your home university can help you with transport fees.

[More information p. 9.](#)

## Banks and money transfer

France's currency is the Euro, as in 18 other European Union countries (Austria, Belgium, Cyprus, Estonia, Finland, Germany, Greece, Ireland, Italy, Latvia, Lithuania, Luxembourg, Malta, the Netherlands, Portugal, Slovakia, Slovenia and Spain).

#### → Opening a bank account: what for?

Opening a French bank account is compulsory for students who wish to benefit from the housing aid (APL, see p. 17), scholarships or salaries and for the purchase of tax stamps online.

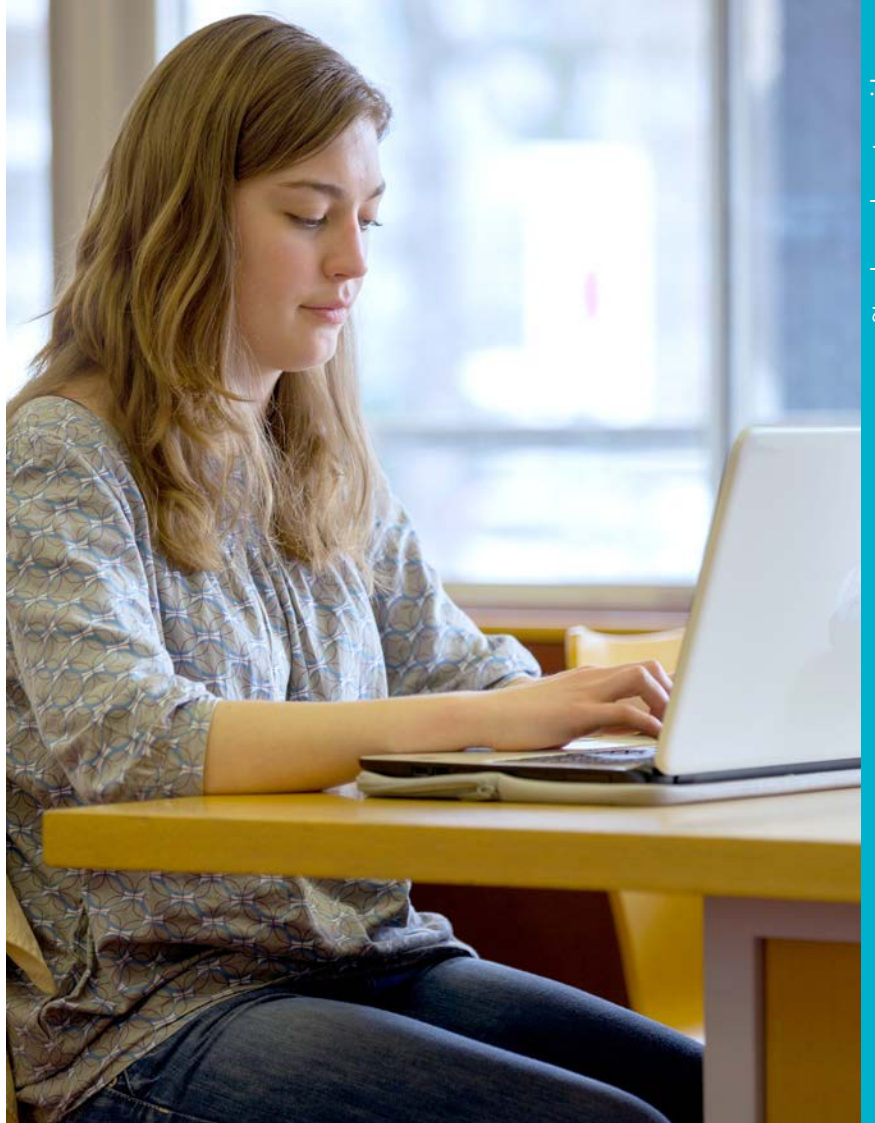
In most cases, opening a bank account is free, although certain services could be charged. Once you have opened your account, you will be able to generate statements of banking identity (relevé d'identité bancaire - RIB). They enable you to communicate your bank particulars in order to pay your rent or invoices (by direct debit, "prélèvement") or to receive your grants or wages (by transfer, "virement").

Major credit cards (Visa and MasterCard) are accepted by most places, and there are ATMs everywhere. In France, checks are used less and less. Moreover, checks from foreign banks are rarely accepted.

#### → How to proceed?

- ◆ Choose a bank and make an appointment. It may be useful to ask your own bank if it is associated with a French network; this can facilitate the opening of the account as well as remittances even before you arrive in France.
- ◆ You will have to bring:
  - an ID or passport
  - your residence permit (except for European students)
  - proof of residential address, less than 3 months old (electricity or telephone bill, accommodation certificate, etc.)
  - student card or enrolment certificate

International students can open either a "non-resident" or a "resident" bank account if the length of stay permits it.



International university house



# Support on arrival

## The International University House

It is the university welcome desk for all international students and researchers!

The International University House (Maison universitaire internationale) is only a couple minutes away from the central campus. All administrative services dedicated to international students (exchange and regular students) are located there, as well as Eucor – The European Campus offices.

- ◆ You will find all the help and information you need regarding your arrival in Strasbourg and administrative formalities (enrolment, housing, Social security).
- ◆ Cultural activities (tours, visits) are organised at the beginning of each semester, and events all through the year.
- ◆ A range of French classes are also offered, adapted to the needs of international visitors.

11 Presqu'île Malraux – Strasbourg

Monday to Friday 9am-12am

(and on appointment in the afternoon)

[unistra.fr](http://unistra.fr) > « Vous êtes » > Etudiant / chercheur étrangers

[facebook.com/international.unistra](https://facebook.com/international.unistra)

## How to meet new people in Strasbourg?

- ◆ Enrol in one of the numerous sports courses of the sports centre (p. 13) and made for students. Hikes and excursions are also planned on the weekends.
- ◆ You want to practice French or another language, while making friends? Start a Tandem (p.14)!
- ◆ And join parties, visits and trips organised by the student associations (p.13) all year long!

## September events

The term start Agora is the university's set up to start off the academic year and deal with your entry formalities. Do not miss the welcoming activities, at the beginning of 1<sup>st</sup> semester: two weeks in September, dedicated to the presentation of university services and student associations.

The whole programme will be available on the university website towards the end of summer: [bienvenue.unistra.fr](http://bienvenue.unistra.fr)

## The Agora

The Service of University Life - Welcome mission (service de la vie universitaire - mission accueil) is a welcome and service centre located on the central Esplanade campus. At the beginning of the academic year (in September), the "Agora de rentrée" event groups all the services useful to students:

- ◆ Support with administrative formalities (residence permit)
- ◆ Search for accommodation
- ◆ Family allowances fund services (Caisse d'allocations familiales – CAF)
- ◆ Information on student Social security
- ◆ Public transport, train and Vélhop subscriptions
- ◆ As well as university services: cultural action, university libraries and sport among others.

Contact: [svu-accueil@unistra.fr](mailto:svu-accueil@unistra.fr)

## Strasbourg loves its students

"Strasbourg aime ses étudiants" is initiated by the City and Eurometropolis of Strasbourg. It aims at valorising students' initiatives and improving their arrival. The "events calendar" is a guide available in a paper version and online. It lists all events that are organised for and by students in September and October.

For more information visit [strasbourgaimesesetudiants.eu](http://strasbourgaimesesetudiants.eu)

## Student associations

University student associations and clubs can also provide information, before your arrival as well as throughout the year. They are present during the September welcome weeks, and usually organise multiple events at the beginning of the year.

[Learn more p. 13.](#)



## The International University House

[facebook.com/international.unistra](https://facebook.com/international.unistra)



## September welcome services

[bienvenue.unistra.fr](http://bienvenue.unistra.fr)

## Other welcome services

### → The Crous

The Crous facilitates student integration in Strasbourg, including international students.

A self-service IT room is available where you can consult job offers ([jobaviz.fr](https://jobaviz.fr)) and housing ads ([lokaviz.fr](https://lokaviz.fr)). Events are organised all year long: cultural activities, theme meals, international evenings and movie nights among others.

### → The Department for University Life (SVU)

The Department for University Life (Service de la vie universitaire - SVU) welcomes all students and develops university life at the Université de Strasbourg. Its actions are focused on four general missions: Welcome Mission - Student life Mission - Disability Mission - Events Mission.

### → Department for University Life - Disability Mission

The disability mission (Mission Handicap) provides disabled students with the best possible learning conditions. It organises the necessary helps and advises them on the development of their academic and professional projects.

Building "Le Platane" (ground floor)  
+33 (0)3 68 85 63 69  
[svu-handicap@unistra.fr](mailto:svu-handicap@unistra.fr)  
[unistra.fr](https://unistra.fr) > [Vie des Campus](#) > [Accompagnement du handicap](#)

### → Espace Avenir

The Espace Avenir provides students with career information, guidance and counselling service. It is an essential structure of the Université de Strasbourg, to help and guide you in your choice of studies and your search for an internship or a job.

### → France-Japan university house

A few minutes away from the central campus, this centre, unique in France, welcomes and facilitates the integration of Japanese students, teachers, and researchers. Computers with Japanese keyboards and free Japanese and French books and newspapers are available for free.

[mufrancejapon.u-strasbg.fr](https://mufrancejapon.u-strasbg.fr)

## Contacts

### Guidance and counselling

#### Espace Avenir

Office hours: Monday to Thursday 10am-1pm and 2-5pm

Building "Nouveau Patio"  
20a rue René Descartes – Strasbourg  
[espace-avenir@unistra.fr](mailto:espace-avenir@unistra.fr)  
[espace-avenir.unistra.fr](https://espace-avenir.unistra.fr)

### Admission / inscription

#### Regular students

#### Department of Studies / Département des études et de la scolarité

Building "Le Patio"  
22 rue René Descartes – Strasbourg  
[unistra.fr](https://unistra.fr) > International > Venir à Strasbourg

#### Exchange students

#### International University House / Maison universitaire internationale

11 presqu'île André Malraux – Strasbourg  
Erasmus+ students:  
[dri-erasmus-incoming@unistra.fr](mailto:dri-erasmus-incoming@unistra.fr)  
Outside Erasmus+ students:  
[dri-students-exchange-outside-europe@unistra.fr](mailto:dri-students-exchange-outside-europe@unistra.fr)  
[unistra.fr](https://unistra.fr) > International > Venir à Strasbourg

### Welcome services

#### International University House / Maison universitaire internationale

11 presqu'île André Malraux – Strasbourg  
Housing: [info-logement@unistra.fr](mailto:info-logement@unistra.fr)  
Other informations:  
[mui-info@unistra.fr](mailto:mui-info@unistra.fr)  
[facebook.com/international.unistra](https://facebook.com/international.unistra)  
[unistra.fr](https://unistra.fr) > International > Venir à Strasbourg

#### Department for University Life - Welcome Mission / Service de la vie universitaire - Mission accueil

Building "Le Platane"  
2 allée René Capitant – Strasbourg  
+33 (0)3 68 85 60 10  
[svu-accueil@unistra.fr](mailto:svu-accueil@unistra.fr)  
[unistra.fr](https://unistra.fr) > Vie des campus > Vie universitaire

### Housing / Grants

#### Crous de Strasbourg

Office hours: Monday to Friday 9-12 am and 1-4pm  
1 boulevard de la Victoire – Strasbourg  
+33 (0)3 88 21 28 00  
Crous bursary :  
+33 (0)9 69 39 19 19  
(from Monday to Friday - 11am to 5pm).  
Housing : [logement@crous-strasbourg.fr](mailto:logement@crous-strasbourg.fr)  
Other informations : +33 (0)3 88 21 28 00.  
[facebook.com/crous.de.strasbourg](https://facebook.com/crous.de.strasbourg)  
[crous-strasbourg.fr](https://crous-strasbourg.fr)

### Alumni network

[alumni.unistra.fr](https://alumni.unistra.fr)

### Université de Strasbourg

CS 90032  
67081 Strasbourg Cedex  
+33 (0)3 68 85 00 00  
[unistra.fr](https://unistra.fr)  
[facebook.com/unistra](https://facebook.com/unistra)  
[Twitter @unistra](https://twitter.com/unistra)