



School of Economics and Management

TECHNICAL UNIVERSITY OF LISBON

Department of Economics

António Afonso and Jorge Silva

**The Fiscal Forecasting Track Record of
the European Commission and Portugal**

WP 37/2012/DE/UECE

WORKING PAPERS

ISSN Nº 0874-4548



THE FISCAL FORECASTING TRACK RECORD OF THE EUROPEAN COMMISSION AND PORTUGAL^{*}

António Afonso^{\$ #} and Jorge Silva^{+ *}

November 2012

Abstract

This study aims at explaining the deviation between the budget balance ratio forecasts and the outcomes in the Portuguese official forecasts and in the European Commission (EC) vintage forecasts. Therefore, we used data from the EC for the period 1969-2011 and also the Portuguese official forecasts for 1977-2011. We explain the deviation of the budget balance-to-GDP through econometric estimations and present statistical decomposition about budget balance, revenue and spending-to-GDP deviations. The statistical significance of real GDP and inflation deviations reveals the effect of automatic stabilizers and the imperfect tax indexation system. The European panel reveals statistical significance (no significance) of investment (unemployment) deviations in the budget-to-GDP ratio. Countries with better fiscal rules seem to present favourable deviations (in the absence of fixed effects). In Portugal, there is evidence of unfavourable errors about the budget balance in nominal currency in most years, which has been offset (totally or partially) by a favourable nominal GDP effect deviation.

Keywords: macro forecasts, fiscal forecasts, EU, Portugal.

JEL: C23, E44, H68.

^{*} The authors are grateful to Patrícia Martins for very useful comments. The opinions expressed herein are those of the authors and do not reflect those of the ECB or the Eurosystem.

^{\$} ISEG/UTL - Technical University of Lisbon, Department of Economics; UECE – Research Unit on Complexity and Economics. UECE is supported by FCT (Fundação para a Ciência e a Tecnologia, Portugal), email: aafonso@iseg.utl.pt.

[#] European Central Bank, Directorate General Economics, Kaiserstraße 29, D-60311 Frankfurt am Main, Germany.

⁺ ISEG/UTL - Technical University of Lisbon, email: jorgefariasilva@gmail.com.

^{*} Ministry of Finance, Directorate General Budget, 1149-004 Lisbon, email: jorgedaniel.silva@dgo.pt

Contents

1	Introduction.....	3
2	Related Literature.....	4
3	Methodology	8
3.1	Forecasts from the European Commission	9
3.2	Forecasts from the Portuguese Government	10
4	Empirical analysis	10
4.1	Data.....	10
4.1.1	European Commission 1969-2011	10
4.1.2	Portuguese Government 1977-2011.....	12
4.2	Results	13
4.2.1	European Commission.....	13
4.2.1.1	Analysis for 1969-2011.....	13
4.2.1.2	Analysis for 1999-2011.....	21
4.2.1.3	Government Budget constraint 1999-2011	25
4.2.1.4	Expenditure-to-GDP ratio: numerator and denominator effects	27
4.2.1.5	Revenue-to-GDP ratio: numerator and denominator effects.....	30
4.2.2	Portuguese Government forecasts.....	31
4.2.2.1	Regression analysis	31
4.2.2.2	Decomposition of the budget balance-to-GDP ratio	33
5	Conclusion	36
	References.....	38
	Appendix.....	39

1 Introduction

This study aims at explaining the divergence between the State Budget deficit forecasts and the final outcomes in the Portuguese official forecasts and in the European Commission semi-annual vintage forecasts. Nowadays this subject is quite interesting because fiscal policy has had an important role in the sovereign debt crisis as well as in the effects on the macroeconomic environment, and on its linkages with the financial and capital markets. Therefore, deviations between planned and observed fiscal balance-to-GDP ratios have affected the credibility of the implementation of fiscal policy in some countries in the euro area. As a consequence, such deviations may have caused negative impacts on the interests rates paid on public debt and made it difficult to rollover the outstanding stock of government debt. For instance, yields of 10-year general government in the period 1998-2008 in the European Union increased not only with decreases of budget balance-to-GDP, but also with better growth forecasts (Afonso, 2010).

Furthermore, it is important to stress that during several years the budget deficit projections underlying the Portuguese State Budget as well as the Stability and Growth Programme, seem to present errors with reasonable size when compared with final national accounts' outcome. For instance, the 3% limit for the budget deficit has been reached in some years under the Stability and Growth Pact (SGP), but one-off measures on the revenue side were used in the beginning of the 2000s in order to respect such budget deficit ratio limit.

Therefore, we carry out a study using two data sets from the European Commission – for the period 1969-2011 and 1998-2011, and also the Portuguese official forecasts for 1977-2011. We explain the dependent variable, the deviation of the budget balance ratio (and of the general government debt ratio in some cases) through econometric estimations, as well as a statistical decomposition about the deviations underlying the budget balance, revenue and spending-to-GDP ratios.

The main conclusions of the thesis are: i) there is evidence that the deviations of real GDP and inflation can explain the deviations of the budget balance ratios, with statistical significance and a relevant magnitude, both in European and Portuguese data; ii) in the case of the European Commission forecasts, total investment growth deviations reveal statistical significance and low coefficient estimates, while the unemployment rate deviation is not relevant, and the fiscal rules index also presents statistical significance, when estimated without fixed effects; iii) in the case of Portuguese forecasts, the deviation of the budget

balance-to-GDP ratio can be decomposed into a nominal effect with a unfavourable error, and into a denominator effect with a favourable error effect.

The thesis is organized as follows. Section two reviews the related literature. Section three presents the methodology. Section four reports the results of the empirical analysis. Section five concludes.

2 Related Literature

To place this study in the literature, there are some studies about forecast balance errors' performance and fiscal policy that should be taken into account. Some of the main studies as well as methodologies and results are presented here.

Pina and Venes (2007) analyzed the track record of fiscal forecast errors of 15 European Union member states from 1994 to 2006. This paper used data from the Excessive Deficit Procedure (EDP) instead of the SGP, as well as studying the forecast error not only of the budget balance-to-GDP ratio, but also the interest payments and gross fixed capital formation (GFCF). The study included a large range of variables – economic variables of control, fiscal governance (commitment, delegation, mixed or fragmented), forthcoming elections, numerical rules, ongoing or run-up to EDP, and government's strength or ideology. They used pooled OLS with clustered robust standard errors, while fixed effects were often imprecise and random effects estimator required more restrictive assumptions.

They performed an analysis of bias and autocorrelation of forecast errors. In the analysis of budget balance forecast errors, countries with commitment or mixed forms in fiscal governance were associated with more prudent fiscal predictions. In addition, elections seemed to be linked to opportunistic motivations and fiscal rules were connected with more cautious forecasts. The effects of fiscal rules and institutions as well as opportunistic political variables have become stronger under the SGP.

Moulin and Wierds (2006) investigated the track record of multiannual budgetary plans of European Union (EU) member states, using data from stability and convergence programmes. The results showed that there were failures in projected reductions of expenditure-to-GDP ratios due to difficulties in reducing spending in nominal terms instead of stemming from unfavourable macroeconomic developments. The revenue-to-GDP ratio had not decreased as

predicted, which limited the gap between the planned and observed variations in the government deficit ratio.

They also analyzed the composition of the variation in the expenditure-to-GDP ratio, and concluded that the effect of nominal expenditure was more relevant than the denominator effect connected to divergences in nominal growth forecast. Furthermore, in the high initial deficit countries the denominator effect was more relevant than in other EU member states.

Naturally, it is important to stress that over predictions of real GDP growth may have negative impacts on government spending. For instance, higher unemployment than expected puts pressure on social benefits, higher interest rates may imply larger debt interest payments, and the underestimation of inflation may increase nominal expenditure because social benefits and salaries of public employees are indexed on prices variation in many countries. An analogous analysis can be performed for the revenue-to-GDP ratio. However, slippages seem to be smaller than in the expenditure ratios because the elasticity of government revenue with respect to output is estimated to be close to one, i.e. developments in economic growth would translate into proportionate variations in revenue, allowing a constant ratio.

In addition, the authors also presented the decomposition of expenditure slippages for each individual country, 11 at total over the period 1998-2005, identifying the contribution of interest expenditure, inflation and real GDP growth. Overall, the divergence between budgetary predictions and outcomes may be explained by the inability of governments to cut expenditure in line with their ambitious plans. Furthermore, there was evidence of deliberately optimistic growth forecast for some countries when the European Commission projections were used as benchmark.

Annett (2006) argued that the SGP had been a success in many EU countries, especially in smaller member states, which were subject to greater macroeconomic volatility and presented fiscal governance based on targets and contracts. The reputational costs for noncompliance would be more important in a small country due large external influences. In their analysis, with annual data from 1980-2004, they used several economic variables (lagged CAPB, output gap, and lagged deficit), fiscal governance (delegation, commitment or fiefdom), relative economic size, volatility growth and forthcoming elections.

According to their results, countries with commitment and high growth volatility were associated with lower forecast errors in budgetary projections. The rules-based fiscal

framework seemed to mitigate the adverse effects of elections, but in the SGP period this distortion rose again. It is important to stress that the member states with independent forecasts tended to present lower prediction divergence.

Brück and Stephan (2005) estimated the political determinants of budget deficit forecast errors in the period under the SGP, concluding that governments had manipulated predictions before elections. The political orientation and the institutional framework may have influenced the quality and bias of forecasts.

The authors used Weighted Least Squares for testing the underlying rationality of predictions, with country and time-specific effects and factors such as GDP forecast errors, months till elections, political orientation, coalition government and minority government. The analysis, for eurozone and non-eurozone OECD countries, with data from spring and autumn publications of the European Commission, suggests that euro area governments issued biased budget predictions before elections with the introduction of SGP, in order to respect the limit imposed by the Pact. Furthermore, political parties of government moving to right (left) made cautious (optimistic) forecasts.

Strauch, Hallerberg and von Hagen (2004) also studied the performance of budgetary and growth forecasts of EU member states. They assessed the impact of economic, political and institutional factors on the predictions, concluding that the cyclical position and fiscal governance were determinants of forecast biases. There were cautionary and optimist biases among countries.

They used data from the Stability and Convergence Programmes from 1991 to 2002, and they report evidence of a pro-cyclical fiscal stance, at least during the convergence process until 1998. Moreover, the authors studied the possibility of European Commission (EC) projections f_{it+h}^{ec} encompassing the programme forecasts f_{it+h}^p , suggesting that knowing the EC predictions little can be gained by further information coming from programme projections, as showed the estimation of the outcome y_{it+h} in the following model.

$$y_{it+h} = \beta_1 f_{it+h}^p + \beta_2 f_{it+h}^{ec} + \varepsilon_{it} \quad (1)$$

In addition, the authors estimated the fiscal variable f_{it} in a multivariable regression, integrating political and institutional factors p_{it} as well as economic control variables x_{it} in a cross-sectional time series data set. However, it is important to stress the inclusion of

institutional factors of fiscal governance (commitment, delegation or mixed), pre-election year and the ideological complexion of government (veto):

$$f_{it} = \alpha + \beta_1 X_{it} + \gamma_2 P_{it} + \varepsilon_{it} \quad (2)$$

Furthermore, they analyzed the fiscal stance f , i.e. change in the budgetary balance s , to see if the growth rate of GDP Y would have been the same as in preceding year.

$$f = \Delta s - \gamma s \quad (3)$$

Artis and Marcellino (2000) studied the performance of the government deficit forecasts by international institutions – EC, IMF and OECD for the G7 countries, providing different outcome among countries and supporting an idea of asymmetric loss function. They assessed the likely unbiasedness in the forecast divergences in equation below, using a t-test for $\beta_0 = 0$ (*No bias*) and a Lagrange Multiplier test (*No corr*):

$$e_h = \beta_0 + v_h \quad (4)$$

where e denotes the forecasts errors, β is the constant term of equation and v the residuals.

Moreover, they also studied whether the deviations in forecasts of the budget deficits can be explained by incorrect predictions of other macroeconomic variables, mostly GDP with impact on taxes revenue and expenditure through automatic stabilizers as well as whether inflation can influence balance through the imperfect tax indexation system. In practice, different results were found among countries, and there was no evidence of a single agency with the most accurate projections for all countries, but the EC seems to have a better performance for some countries. However, it is important to stress that some results may be partially explained by the different timing forecasts among agencies because the information set may be different.

The main ideas of the above reviewed literature are summarized in

Table I. Related literature

Author	Data	Study	Conclusions
Pina and Venes (2011)	15 EU countries 1994 - 2006	Two innovations: Data from EDP and forecasts of interests and GFCF. Large range of variables, including fiscal governance (commitment, delegation, mixed or fragmented).	Estimation error in interest payments was difficult to interpret. Opportunistic political variables had become stronger under SGP.
Moulin and Wierds (2006)	EU – SCP	Decomposition of variation in the expenditure-to-GDP ratio – nominal effect was more relevant than denominator one.	Inability of governments to cut expenditure. Evidence of deliberately optimistic growth forecast.
Annett (2006)	EU	Success of SGP in many smaller countries subject to greater macroeconomic volatility, fiscal governance (targets and contracts) and reputational costs and external influences.	Independent forecasts presented lower prediction deviation. Pro-cyclical fiscal policy under SPG. Smaller countries with better structural balance.
Brück and Stephan (2005)	OECD countries; Data: EC forecasts	The political orientation and the institutional framework may have influenced the quality and bias of forecasts.	Euro area governments issued biased budget predictions before elections, under SGP. Government moving to right (left) made cautious (optimist) forecasts
Strauch, Hallerberg and Hagen (2004)	EU SCP 1991 - 2002	Analysis of economic, political and institutions factors in a multivariable regression, including fiscal governance (commitment, delegation, mixed or fragmented). Elasticity of balance with respect to GDP prediction error.	Cyclical position and fiscal governance were determinants of forecast biases. There were cautionary and optimist biases among countries. Pro-cyclical fiscal stance as well electoral cycles under SGP.
Artis and Marcellino (2001)	G7: EC, IMF and OECD	Forecast errors of deficit might be explained by GDP and inflation. Probably persistent errors from tracking behaviour.	No agency with best performance. Different timing forecasts among agencies. Asymmetric quadratic loss function would be possible.

3 Methodology

The current study of budgetary forecasts will take into account the semi-annual forecast vintages of the EC as well as the Portuguese Government predictions, including a number of years and a range of economic predictable variables as large as possible. In this context deviation is defined by the realisation, r , minus the forecast, f :

$$e_{i,t} = r_{i,t} - f_{i,t} \quad (5)$$

where i denotes country and t is the period of prediction.

3.1 Forecasts from the European Commission

We will assess whether the deviation of the budget balance-to-GDP ratio can be explained by deviations of other economic variables. We will use two different approaches – unbalanced panels that will study a set of countries as well as seemingly unrelated regressions (SUR) in order to analyse each country in a particular way.

In addition, the study will also assess the deviations about the decomposition of the government budget constraint - snow ball effect of public debt stock, interest effect, nominal GDP effect, primary balance and other adjustments. This specification integrates not only adjustments with direct impact on government debt but also variables connected to the budget deficit. Therefore, the growth forecast accuracy would have an important role on taxes, expenditures and on the denominator of the ratio. The government budget constraint in (8) illustrates such dynamics:

$$b_t - b_{t-1} = \frac{i_t - n_t}{1 + n_t} b_{t-1} + g_t - \rho_t + sf_t \quad (6)$$

where b is the debt-to-GDP ratio, i is the implicit interest rate paid on the outstanding stock of government debt, n is the nominal growth rate of the economy, g is the primary spending-to-GDP ratio, ρ is the revenue-to-GDP ratio, and sf is the stock-flow adjustment-to-GDP ratio.¹

Furthermore, the decomposition presented by Moulin and Wierds (2006) identifies the nominal and the denominator effects, which allows knowing whether the budget balance forecast error is coming from divergence predictions on GDP as well as from expenditure or revenue items. The decomposition of these effects can be done via

$$\left(\frac{G_{t+n}}{Y_{t+n}} - \frac{G_t}{Y_t} \right) = \left(\frac{G_{t+n} - G_t}{Y_{t+n}} \right) - \left(\frac{G_t}{Y_{t+n}} \right) \left(\frac{Y_{t+n} - Y_t}{Y_t} \right) \quad (7)$$

Strauch, Hallerberg and von Hagen (2004) studied the elasticity of the budget balance with respect to the GDP prediction error ϵ_{growth} , concluding that when actual output growth exceeds forecasts, the budget balance improves by 0.59 percentage points when compared with the budgetary prediction

¹ The stock-flow adjustment includes differences in cash and accrual accounting, accumulation of financial assets, valuation changes as well as other residual effects. This term has assumed particular relevance during the recent crisis in light of the financial support provided by many euro area governments to ailing financial institutions and some state owned enterprises.

$$e_{balance} = 0.07 + 0.59 e_{growth} + v \quad (8)$$

In this study we will take into account deviations not only of the budget balance-to-GDP ratio and of real GDP but also of the unemployment rate, investment and other variables.

3.2 Forecasts from the Portuguese Government

The Portuguese data will be studied with a particular detail, i.e. the deviation between forecasts of budget balance-to-GDP ratios and the respective realisations will be explained by divergence of predictions of real GDP growth and price variations. Furthermore, it will be possible to have the decomposition of the deviation of budget balance-to-GDP ratios between denominator and nominal effect, as well as identifying the size of temporary measures in recent years.

4 Empirical analysis

4.1 Data

The data base covers the vintage forecasts of the European Commission regarding the two publications per year – spring and autumn, while the Portuguese Government predictions come from the state budget reports and/or from other connected documents in a supplementary way detailed below.² Predictions about real GDP, prices variation and balance are the main variables taken into account by these two last institutions. Therefore, some variables may be hidden, which would be an additional source of problems in the econometric analysis. Furthermore, Stability (or Convergence) Growth Programmes could have been an alternative data source because they include a set of variables required by the European institutions in order to present comparable information. However, this kind of analysis has been already used by other studies.

4.1.1 European Commission 1969-2011

There are two data bases about forecasts with different range of variables and periods. A data set³ for the period (1969-2011) includes the European Union, the Euro Area and the 15 oldest

² The forecasts of the OECD and the IMF were not included because there was no available large range of variables in a reasonable period in order to build comparable series for a small country like Portugal. For a comparison of predictions for those institutions see notably Martins (2012).

³ This data base was kindly provided by the DG ECFIN and had been used in a previous study for the period 1969-2005 (Melander, Sismanidis, & Grenouillea, 2007). Data base was updated until 2011 in line with authors criteria, notably realization based on the “first available estimates” instead of final results, which would have revised values in some cases.

Member States⁴ since the year of adhesion to the EU. This dataset contains current year projections from the spring publication, one year ahead projections from the autumn forecast, as well as realisations based on the “first available estimates” published in the following year – the spring estimates and values available in the autumn, for the current year and year ahead, respectively. Some economic variables with available deviations are budget balance-to-GDP ratio, inflation, investment, unemployment rate, current account as percentage of GDP and employment variation.

Another data set was built for the EMU period (1999-2011) with twice a year vintage forecasts since Spring 1998 (original time span is 1998:1-2010:2) for the same set of countries, including a larger range of variables – real GDP, inflation, GDP deflator, unemployment rate, investment, general government gross debt, primary balance, revenue-to-GDP, expenditure-to-GDP, and budget balance-to-GDP ratios. Some variables were not available in the beginning of this period for all countries and Luxembourg had not available data in some indicators until later - autumn 1999. This data base will allow econometric estimations as well as the decomposition of effects underlying the government budget constraint and revenue/expenditure-to-GDP ratios. It is important to stress that this data set includes realisations based on final results from AMECO and Eurostat.⁵ There are differences between data sets because the realizations for the period 1969-2011 are based on first estimates, while the outcomes for 1998-2011 contain revised data (and revisions usually include a systematic bias in Europe, see Castro, 2012). In this case, we used revised data because there is evidence that first estimates are biased and revisions tend to present lower budget balances.

Furthermore, the fiscal rules index published by the European Commission for the period 1990-2010 also will be taken into account, as a possible determinant of forecast deviations. This time span is longer when compared with existing studies about this subject, but it is not as long as the data base (1969-2011) available for other variables, which then constrains a panel econometric estimation.

⁴ Countries included are: Belgium; Germany; Greece; Spain; France; Ireland; Italy; Luxembourg; Netherlands; Austria; Portugal; Finland; Denmark; Sweden; United Kingdom.

⁵ AMECO and Eurostat dataset, 8 June 2012.

4.1.2 Portuguese Government 1977-2011

The set of available variables includes deviations of the budget balance-to-GDP ratio, real GDP growth rates and prices variation. The information comes from the state budget reports for recent years as well as from the State Budget Law, Decree-Law and *Grandes Opções do Plano* for the earlier period. The predictions underlying to the State Budget are available during the end of previous year⁶. However, the State Budget Laws were available during the implementation year in case of elections, appointments of new a government or other political factors. The data set was then constructed covering each predictable variable with particular detail (see Appendix Table A7).

The availability of information during 1970s and 1980s is scarce and the month of publication was different among years. For example, the prediction for 1979 was found in *Previsões Macroeconómicas* of October 1979 - real GDP and prices. In addition, projections for 1983 were another difficult case, and we used *Grandes Opções do Plano* for the medium term published in 1981, for forecasts about real GDP and prices variation because predictions of economic variables were not available in 1983.

The prediction of the budget balance-to-GDP ratio of the Administrative Public Sector on accrual basis was the desirable variable connected with the budgetary forecasts during the 1970s, 1980s and 1990s, however, in some years there was only information on cash basis. The general government balance on accrual basis is the measure of public sector in recent years, which has been used by Eurostat.

The desirable measure of price variation is the GDP deflator. Still, it was not possible to find information about this variable for 1989 and 1990. Therefore, it was used a measure of inflation in a supplementary way – the variation of private consumption deflator and consumer prices index for 1989 and 1990 respectively.

The final data for the Portuguese case come from the National Accounts provided by the Statistics Portugal (INE) according to the European System Account as well as from the Eurostat and AMECO data base. This information, reported by INE to European Institutions, is comparable with data from other member states. Revised data include the period 1977-2011, while first estimates are available after the middle of 1980s.

⁶ Actually, the government must present a draft of the State Budget and a deliver it to the Parliament until 15 October, unless elections take place and a new government takes in this period.

4.2 Results

4.2.1 European Commission

4.2.1.1 Analysis for 1969-2011

The estimations based on one year ahead forecasts (data from Autumn) suggests that the deviations of budget balance-to-GDP ratios may be explained by errors of projections about other variables – mostly real GDP growth, investment variation and inflation (see Table II).

In regression (1), we may conclude that a favourable deviation of real GDP of 1 percentage point (pp) has a positive impact of 0.39 pp on the deviations of general government budget balance ratio. Higher inflation than predicted of 1pp may improve the balance-to-GDP ratio in 0.23pp. These effects may be associated with deviation of nominal GDP, in which higher growth means lower unemployment, less social benefits and higher tax receipts in line with expected with automatic stabilizers. Investment variations seem to present statistical significance, but the coefficient has a low magnitude.

The dependent variable and explanatory variables included in regressions are the following:

$$\begin{aligned} \Delta(b_{t+1} - b_{t+1}^*) = & \alpha_0 + \alpha_1 \Delta(gdp_{t+1} - gdp_{t+1}^*) + \alpha_2 \Delta(inv_{t+1} - inv_{t+1}^*) + \\ & \alpha_3 \Delta(\inf_{t+1} - \inf_{t+1}^*) + \alpha_4 \Delta(un_{t+1} - un_{t+1}^*) + \alpha_5 \Delta(cur_{t+1} - cur_{t+1}^*) + \alpha_6 AR(1) \end{aligned} \quad (9)$$

where $\Delta(b_{t+1} - b_{t+1}^*)$ denotes dependent variable (first difference of the budget balance ratio deviation). Explanatory variables are the same operator about real growth (gdp), investment (inv), inflation (inf), unemployment (un) and current account (cur). There is an autoregressive parameter AR(1).

Table II. Estimation for the first difference of the budget balance-to-GDP ratio deviation, 1969-2011, $\Delta(b_{t+1} - b_{t+1}^*)$

Variable	(1)	(2)	(3)
Constant	0.0054 (0.1)	0.0115 (0.1)	0.0124 (0.1)
Δ real GDP growth deviation	0.3883*** (4.5)	0.3813*** (4.5)	0.3775*** (4.3)
Δ investment growth deviation	0.0968*** (3.1)	0.0940*** (2.8)	0.1097*** (3.2)
Δ inflation deviation	0.2283* (1.9)	0.2217* (1.8)	0.2306* (1.9)
Δ unemployment rate deviation		-0.0805 (-0.8)	-0.0615 (-0.6)
Δ current account deviation			0.0628* (1.7)
AR(1)	-0.3301*** (-4.7)	-0.3353*** (-4.6)	-0.3471*** (-4.9)
Adjusted R-square	0.35	0.35	0.36
Observations	509	503	494
Period	1972-2011	1973-2011	1973-2011

Notes: fixed effects. t-statistics in brackets. *, **, *** denote significance at 10, 5 and 1% levels.

We analyzed the possible endogeneity between the dependent variable and real GDP growth deviation through instrument variables (IV) and two stage least squares (2SLS). The instruments were the lagged real GDP growth deviation (first and second lags). It was not found evidence of endogeneity (see Table III and Table A1 in the Appendix).

The regressions take into account the estimate of real GDP growth deviation in order to evaluate its statistical significance

$$\Delta(b_{t+1} - b_{t+1}^*) = \alpha_0 + \alpha_1 \Delta(gdp_{t+1} - gdp_{t+1}^*) + \alpha_2 \Delta(inv_{t+1} - inv_{t+1}^*) + \alpha_3 \Delta(\inf_{t+1} - \inf_{t+1}^*) + \alpha_4 \Delta(un_{t+1} - un_{t+1}^*) + \alpha_5 \Delta(cur_{t+1} - cur_{t+1}^*) + \alpha_6 \Delta(gdp_{t+1} - gdp_{t+1}^*) + \alpha_7 AR(1), \quad (10)$$

where

$$\Delta(gdp_{t+1} - gdp_{t+1}^*) = \alpha_0 \Delta(gdp_t - gdp_t^*) + \alpha_1 \Delta(gdp_{t-1} - gdp_{t-1}^*) \quad (11)$$

Table III. Estimation for the first difference of the budget balance-to-GDP ratio deviation, 1969-2011, $\Delta(b_{t+1} - b_{t+1}^*)$ (instrumental variables)

Variable	(1)	(2)	(3)
constant	0.1342 (0.9)	0.1361 (1.0)	0.1296 (0.9)
Δ real GDP growth deviation	0.3946*** (4.0)	0.3716*** (3.9)	0.3644*** (3.8)
Δ investment growth deviation	0.0983*** (2.9)	0.0977*** (2.8)	0.1123*** (3.1)
Δ inflation deviation	0.2164* (1.9)	0.2032* (1.8)	0.2084* (1.8)
Δ unemployment rate deviation		-0.0950 (-1.2)	-0.0835 (-1.0)
Δ current account deviation			0.0567* (1.7)
Estimate of Δ real GDP growth deviation	0.3143 (0.8)	0.4296 (1.2)	0.4025 (1.1)
AR(1)	0.2746*** (3.7)	0.2671*** (3.5)	0.2690*** (3.7)
Adjusted R-square	0.39	0.39	0.39
Observations	497	496	488
Period	1973-2011	1973-2011	1973-2011

Notes: t-statistics in brackets. *, **, *** denote significance at 10, 5 and 1% levels

In this case, it does not seem that there is evidence of endogeneity because the estimated parameter for real GDP growth deviation does not present statistical significance.

Regression (2) in Table II shows that forecast deviations about the unemployment rate do not contribute to explain the dependent variable. On the other hand, in regression (3) we see that positive forecast errors in current account-to-GDP ratios have a positive and statistically significant effect on the budget balance deviation errors. Forecast errors of inflation, the unemployment rate and real GDP growth remain rather similar in magnitude in regressions (2) and (3).

The average of real GDP deviations in the sample as a whole reveals a negative deviation, while inflation presents a positive one, which means the EC forecasts may have overestimated real growth and underestimated inflation, attaining eventually a similar nominal GDP with a different decomposition.

We used a *first differences* method in order to avoid eventual problems connected with individual effects of each country. For example, indicators of fiscal governance could have been taken into account as dummy variables such as in some studies. However, our panel data set (vintage forecasts) starts in the beginning of the 1970s, in which case there was a lack of information about fiscal rules. Therefore, one possible solution to overcome that likely problem may be a regression based on the *first differences* method.

Furthermore, given that the Durbin Watson statistics seems to reveal serial correlation when it was used deviation of predictions. Therefore, it was taken into account a AR(1) variable in order to address that issue. However, we have estimated the budget balance ratio deviation with fixed effects (Table IV):

$$(b_{t+1} - b_{t+1}^*) = \alpha_0 + \alpha_1(gdp_{t+1} - gdp_{t+1}^*) + \alpha_2(inv_{t+1} - inv_{t+1}^*) + \alpha_3(inf_{t+1} - inf_{t+1}^*) + \alpha_4(un_{t+1} - un_{t+1}^*) + \alpha_5(cur_{t+1} - cur_{t+1}^*) + \alpha_6 AR(1) \quad .(12)$$

Table IV. Estimation for the budget balance-to-GDP ratio deviation, 1969-2011,

$(b_{t+1} - b_{t+1}^*)$			
Variable	(1)	(2)	(3)
constant	0.0624 (0.4)	0.0434 (0.3)	0.0395 (0.3)
real GDP growth deviation	0.3954*** (4.0)	0.3699*** (3.9)	0.3658*** (3.8)
investment growth deviation	0.1025*** (3.1)	0.1025*** (3.0)	0.1149*** (3.4)
inflation deviation	0.1949* (1.7)	0.1882 (1.6)	0.1878 (1.6)
unemployment rate deviation		-0.0977 (-1.2)	-0.0859 (-1.1)
current account deviation			0.0343 (1.0)
AR(1)	0.2454*** (3.3)	0.2385*** (3.2)	0.2392*** (3.3)
Adjusted R-square	0.38	0.38	0.38
Observations	526	520	512
Period	1971-2011	1972-2011	1972-2011

Notes: fixed effects. t-statistics in brackets. *, **, *** denote significance at 10, 5 and 1% levels

From (12) we conclude that a positive deviation of real GDP growth of 1 pp means a favourable impact on the budget balance ratio of 0.40 pp, in the case of regression 1.

Furthermore, higher investment variation (1 pp) has a positive effect on the budget balance-to-GDP of 0.10 pp, which is relevant when we take into account the weight of investment inside GDP. Inflation deviation (1 pp) has a favourable impact on the dependent variable is 0.19 pp, lower statistical significance. These results reveal the impact of automatic stabilizers and the imperfect taxation system on the public accounts. The unemployment rate deviation does not reveal statistical significance, which may be explained by correlation between this variable and the real GDP growth deviation, i.e. in case of a regression with constant term and unemployment rate deviation, this would have statistical significance.

Moreover, in this case we analyzed the likely endogeneity between budget balance deviation and real GDP growth rate error. The instruments were real GDP growth rate of previous years (two lags). There is no evidence of endogeneity (see Table V and Table A2 in the Appendix, since there is no statistical evidence regarding the variable “estimate of real GDP growth”, previously estimated via (11)).

Table V. Estimation for the budget balance-to-GDP ratio deviation, 1969-2011,

$(b_{t+1} - b_{t+1}^*)$ (Instrumental variables)			
Variable	(1)	(2)	(3)
constant	0.1342 (0.9)	0.1361 (1.0)	0.1296 (0.9)
real GDP growth deviation	0.3946*** (4.0)	0.3716*** (3.9)	0.3644*** (3.8)
investment growth deviation	0.0983*** (2.9)	0.0977*** (2.8)	0.1123*** (3.1)
inflation deviation	0.2164* (1.9)	0.2032* (1.8)	0.2084* (1.8)
unemployment rate deviation		-0.0950 (-1.2)	-0.0835 (-1.0)
current account deviation			0.0567* (1.7)
Estimate of real GDP growth deviation	0.3143 (0.8)	0.4296 (1.2)	0.4025 (1.1)
AR(1)	0.2746*** (3.7)	0.2671*** (3.5)	0.2690*** (3.7)
Adjusted R-square	0.39	0.39	0.39
Observations	497	496	488
Period	1973-2011	1973-2011	1973-2011

Notes: fixed effects t-statistics in brackets. *, **, *** denote significance at 10, 5 and 1% levels

We also analyzed the estimations about the predictions of current year (prediction of t in year t), but results seemed statistically poor, which may be a signal that there is no systematic error in the estimated specifications in the short term. The real GDP growth deviation remains important (Table VI illustrates such evidence).

Table VI. Estimation for the budget balance-to-GDP ratio deviation, 1969-2011,

$(b_t - b_t^*)$			
Variable	(1)	(2)	(3)
constant	-0.1439 (1.2)	-0.1405 (-1.1)	-0.1416 (-1.1)
real GDP growth deviation	0.2892*** (3.1)	0.3085*** (2.8)	0.3488*** (3.0)
investment growth deviation	0.0265 (0.7)	0.0231 (0.5)	-0.0028 (-0.1)
inflation deviation	0.1253 (1.0)	0.1350 (1.0)	0.1249 (1.0)
unemployment rate deviation		0.0519 (0.3)	0.0462 (0.3)
current account deviation			-0.1111 (-1.4)
AR(1)	0.2474 (1.3)	0.2461 (1.3)	0.2717 (1.5)
Adjusted R-square	0.19	0.19	0.26
Observations	680	680	680
Period	1972-2011	1972-2011	1972-2011

Notes: fixed effects. t-statistics in brackets. *, **, *** denote significance at 10, 5 and 1% levels

Another possibility is the inclusion of a fiscal rules index in order to proxy the quality of fiscal governance. Our unbalanced panel covers now a shorter period, 1990-2010, because the fiscal rules index, which is connected with fiscal governance and may be a measure of budgetary process, has a smaller time span availability. This fiscal rule index is derived from a questionnaire⁷ that has been sent to all EU member states, which integrates a large range of questions. The survey includes information about nature of the fiscal rule, covered subsectors, legal base of the rule, monitoring of compliance, enforcement of compliance, media and public reaction in case of non-compliance and long-term impact.

⁷ http://ec.europa.eu/economy_finance/db_indicators/fiscal_governance/fiscal_rules/questionnaire_en.htm

Table VII presents estimation results with the fiscal rule index, and we see that the results are kept, when compared with Table IV. Moreover, in regression (1) a favourable deviation of 1 pp in real GDP means a positive deviation of 0.40 pp in the error of the general government budget balance ratio. In addition, deviation errors in inflation of 1 pp result in an impact of 0.46 pp on the dependent variable, while an error of investment variation imply a 0.11 pp effect.

The fiscal rule index is statistically significant, as expected due to previous studies. In fact, we can conclude that the predictions of the EC about a country with a better fiscal rule index tends to increase more likely a favourable (positive) deviation (or reduce an unfavourable one) in the error forecast of the budget balance ratio.

Table VII. Estimation of budget balance-to-GDP ratio deviation, 1990-2010, $(b_{t+1} - b_{t+1}^*)$

Variable	(1)	(2)	(3)
constant	0.1264 (0.7)	0.1222 (0.6)	0.1273 (0.7)
real GDP growth deviation	0.4001** (2.5)	0.3924*** (2.8)	0.3961*** (2.7)
investment growth deviation	0.1138** (2.2)	0.1126** (2.1)	0.1314** (2.2)
inflation deviation	0.4640* (1.8)	0.4633* (1.8)	0.4362* (1.8)
unemployment rate deviation		-0.0415 (-0.3)	-0.0085 (-0.1)
current account deviation			-0.0036 (-0.0)
fiscal rules index	0.3294*** (2.6)	0.3273*** (2.6)	0.3270** (2.5)
AR(1)	0.3204*** (2.9)	0.3173*** (2.9)	0.3143*** (2.8)
Adjusted R-square	0.43	0.44	0.44
Observations	285	285	277
Period	1991-2010	1991-2010	1991-2010

Notes: t-statistics in brackets. *, **, *** denote significance at 10, 5 and 1% levels

On the other hand, we have estimated the equations with panel least squares (Table VII) and fixed effects (Table VIII), however, the statistical significance of the fiscal rules index disappears (when compared with regressions without fixed effects), which may indicate that the individual effects of each country might be included in the fixed effect. As a possible

caveat, one needs to be aware of the fact that one would need to discard the possibility of endogeneity between the budget balance ratio deviation and the fiscal rules index.

Table VIII. Estimation of budget balance-to-GDP ratio deviation, 1990-2010,
 $(b_{t+1} - b_{t+1}^*)$

Variable	(1)	(2)	(3)
Constant	0.2209* (1.7)	0.2123 (1.6)	0.2040 (1.6)
real GDP growth deviation	0.4229*** (2.8)	0.4115*** (2.9)	0.4260*** (2.9)
investment growth deviation	0.1235** (2.4)	0.1212** (2.3)	0.1386** (2.4)
inflation deviation	0.4696* (1.9)	0.4673* (1.9)	0.4567* (2.0)
unemployment rate deviation		-0.0660 (-0.7)	-0.0218 (-0.2)
current account deviation			-0.0032 (-0.0)
fiscal rules index	0.1061 (0.8)	0.1051 (0.8)	0.1487 (1.2)
AR(1)	0.1876* (1.7)	0.1827 (1.6)	0.1748 (1.5)
Adjusted R-square	0.45	0.45	0.45
Observations	285	285	277
Period	1991-2010	1991-2010	1991-2010

Notes: fixed effects. t-statistics in brackets. *, **, *** denote significance at 10, 5 and 1% levels.

The regressions in Table VIII (as in Table VII) do not include data before 1990 of countries that entered in the EU before that year due to the unavailability of fiscal rules index as mentioned before. Furthermore, there is no available information about 2011.

Returning to the longer data set (1969-2011), we can estimate a seemingly unrelated regression (SUR), i.e. estimating regressions with the same variables for each individual country. However, the size of sample is different among countries because the availability of variables for each country is connected with the year they entered in the EU. Therefore, the oldest Member States – France, Italy, Germany, the Netherlands, Belgium and Luxembourg – have 41 annual observations, while Finland, Sweden and Austria have 17 observations.

In Table IX, the SUR estimation results of $t+1$, in year t , reveal that variables have different statistical significance among countries as well as a large range of R-Square and statistics about autocorrelation.

For example, in the case of the EU with 41 observations there are three variables with statistical significance – inflation (0.10 pp), investment (0.13 pp) and real GDP (0.37 pp). In case of France, the same set of variables have statistical significance, but with different magnitudes for the estimated coefficients, 0.34 pp, 0.23 pp and 0.29 pp, respectively. The general specification for country i is presented below:

$$(b_{t+1,i} - b_{t+1,i}^*) = \alpha_{0,i} + \alpha_{1,i}(\inf_{t+1,i} - \inf_{t+1,i}^*) + \alpha_{2,i}(inv_{t+1,i} - inv_{t+1,i}^*) + \alpha_{3,i}(un_{t+1,i} - un_{t+1,i}^*) + \alpha_{5,i}(gdp_{t+1,i} - gdp_{t+1,i}^*) \quad (12)$$

Table IX. Estimation of balance-to-GDP ratio deviation, SUR, 1969-2011, ($b_{t+1} - b_{t+1}^*$)

Variable	constant	inflation deviation	investment deviation	unemployment rate deviation	real GDP growth deviation	observations
Belgium	-0.35	0.06	0.07	-0.27	0.19	41
Germany	0.36**	-0.1	0.08*	-0.06	0.39***	41
Greece	-1.28**	0.29	0.2*	0.09	-0.02	30
Spain	-0.61**	0.22	0.07	-0.24	0.96***	25
France	0.05	0.34***	0.23***	0.22	0.29**	41
Ireland	-0.52	-0.03	0.14**	0.26	0.67***	38
Italy	-0.43*	0.19**	0.01	-0.17	0.31	41
Luxembourg	1.48***	0.06	0	-0.39	0.09	36
Netherlands	0.07	0.2	0.1**	-0.17	0.45***	41
Austria	0.5***	0.56***	0.05	0.34**	0.16	17
Portugal	-0.21	0.69***	0.05	0.27	0.48	25
Finland	1.06***	0.49***	0.14***	0.61**	0.47***	17
Denmark	0.22	0.21	0.21***	0.37*	0.13	35
Sweden	1.22***	-0.22	0.12***	0.11	0.1	17
United Kingdom	-0.18	0.13	0.14**	0.03	0.57***	38
European Union	0.07	0.10**	0.13***	-0.04	0.37***	41
Euro Area	0.33***	0.32**	0.23**	-0.4	0.32	13

Note: Total system (unbalanced), 537 observations. Linear estimation after one-step weighting matrix. t-statistics in brackets. *, **, *** denote significance at 10, 5 and 1% levels.

4.2.1.2 Analysis for 1999-2011

In a panel approach for the period 1998:1-2010:2 the deviation of forecasts of general government budget balance ratio in the year $t+1$ may be explained by other economic

variables projected to $t+1$, notably divergences in inflation and in real GDP, see estimation results in Table X. Furthermore, deviations of observed budget balances in the previous year t may also play a statistically significant role. On another hand, the deviation of predictions of the unemployment rate as well as the period when forecasts were published (spring or autumn) does not present statistical significance. There is no evidence of endogeneity (see Appendix Table A3 and Table A4).

Regression (1) of Table X suggests that there is an unfavourable deviation of 0.67 pp of budget balance-to-GDP ratios in case of no deviations about other variables. Errors in inflation forecasts (1 pp) imply an upward deviation of 0.71 pp and real GDP positive growth deviations of 1 pp cause an upward realization of 0.41 pp in the budget balance ratios' error deviations. The estimation results in regression (1) are then rather consistent with the automatic stabilizers mechanisms and an imperfect indexation tax system. Deviations in total investment growth regressions (2) and (3) have a statistical significance, which may imply that higher than expected investment realizations may also be connected with higher real GDP.

Table X. Estimation of balance-to-GDP ratio deviation, 1998:1-2010:2, $(b_{t+1} - b_{t+1}^*)$

Variable	(1)	(2)	(3)	(4)
constant	-0.6652** (-2.1)	-0.5950** (-2.1)	-0.5588** (-2.4)	-0.4029 (-1.2)
real GDP growth deviation	0.4105*** (4.3)	0.1336 (0.9)	0.1641 (0.9)	0.4283*** (3.3)
investment growth deviation		0.1747** (2.3)	0.1632** (2.4)	
inflation deviation	0.7095*** (2.7)	0.7071*** (2.7)	0.7045*** (3.0)	0.7430*** (3.1)
unemployment rate deviation	-0.1539 (-0.6)	-0.0434 (-0.2)		
balance-to-GDP in t_0	-0.0202 (-0.1)	-0.1131 (-0.7)		
fiscal rules index				-0.5027 (-1.1)
AR(1)	0.5982*** (8.0)	0.5968*** (9.1)	0.5575*** (5.1)	0.6016*** (5.8)
Adjusted R-square	0.69	0.71	0.71	0.68
Observations	425	392	392	375
Period	1998:2-2010:2	1999:1-2010:2	1999:1-2010:2	1998:2-2010:2

Notes: fixed effects. t-statistics in brackets. *, **, *** denote significance at 10, 5 and 1% levels.

On the other hand, in regression (4) in Table X, we get a low estimated coefficient for the fiscal rules index and without statistical significance, which may suggest that the European Commission forecasts are more able to take into account the different performance of fiscal governance among countries in the EMU period. Some previous studies (von Hagen, 2010) have reported the importance of that kind of determinants. Therefore, fiscal governance indicators would have statistical importance in the case of data provided by the national governments such as Stability (or Convergence) and Growth Programmes. The fiscal rules for the budget balance ratio based on the output gap would have been wrong, because potential output bias has been relevant. Therefore, the admissible deficit in real time would have exceeded final values (Kempkes, 2012).

Interestingly, Martins (2012) concludes that the European Commission forecasts were biased, which may be problematical when used as benchmark to evaluate the quality of government forecasts. However, in some cases such as Portugal and Italy, with optimistic government predictions of growth and public accounts, the European Commission forecasts may be a useful reference. Furthermore, Marinheiro (2010) argues that some governments could be forced to justify optimistic deviations between the SGP's macroeconomic scenario and EC forecasts.

In addition, we also assessed the determinants of the forecasts deviations of gross debt of the general government. However, the results show that some variables (budget balance ratio deviation and real GDP growth error) present strong statistical significance.

The dependent variable $(debt_{t+1} - debt_{t+1}^*)$ is the deviation of the prediction for general government debt:

$$(debt_{t+1} - debt_{t+1}^*) = \alpha_0 + \alpha_1(b_{t+1} - b_{t+1}^*) + \alpha_2(gdp_{t+1} - gdp_{t+1}^*) + \alpha_3(inv_{t+1} - inv_{t+1}^*) + \alpha_4(inf_{t+1} - inf_{t+1}^*) + \alpha_5(un_{t+1} - un_{t+1}^*) + \alpha_6(b_t - b_t^*) + \alpha_7 fiscalrules + \alpha_8 AR(1) \quad (13)$$

Table XI. Estimation of debt-to-GDP ratio deviation, 1998:1-2010:2,

$(debt_{t+1} - debt_{t+1}^*)$				
Variable	(1)	(2)	(3)	(4)
Constant	1.2943* (1.7)	1.1611 (1.4)	1.1133 (1.4)	0.7012 (0.8)
balance-to-GDP in t+1	-0.5933*** (-5.6)	-0.5849*** (-4.5)	-0.6400*** (-6.4)	-0.6178*** (-5.9)
real GDP growth deviation	-0.8654*** (-4.5)	-0.8380*** (-3.2)	-0.8729*** (-5.1)	-0.8531*** (-4.9)
investment growth deviation		-0.0113 (-0.1)		
inflation deviation	-0.2409 (-0.7)	-0.3420 (-0.8)		
unemployment rate deviation	0.5722* (1.9)	0.5880* (1.9)	0.6070* (1.9)	0.6181* (1.9)
balance-to-GDP in t0	-0.9954*** (-15.7)	-0.9749*** (-13.1)	-1.0050*** (-15.8)	-1.0067*** (-15.4)
fiscal rules index				0.7610* (1.7)
AR(1)	0.7699*** (14.3)	0.7819*** (14.9)	0.7690*** (13.8)	0.7654*** (13.6)
Adjusted R-square	0.85	0.85	0.85	0.84
Observations	425	292	425	375
Period	1998:2-2010:2	1999:1-2010:2	1998:2-2010:2	1998:2-2010:2

Notes: fixed effects. t-statistics in brackets. *, **, *** denote significance at 10, 5 and 1% levels.

Turning now to the seemingly unrelated regression approach it would be desirable conclude that deviations in variables of some countries could explain divergence of balance relative to GDP. The serial correlation is an additional problem when estimating the regressions. The specification is the following one:

$$\begin{aligned}
 (b_{t+1,i} - b_{t+1,i}^*) = & \alpha_{0,i} + \alpha_{1,i}(gdp_{t+1,i} - gdp_{t+1,i}^*) + \alpha_{2,i}(\inf_{t+1,i} - \inf_{t+1,i}^*) + \\
 & \alpha_{3,i}(un_{t+1,i} - un_{t+1,i}^*) + \alpha_{5,i}(in_{t+1,i} - in_{t+1,i}^*) + \alpha_{6,i}AR(1)
 \end{aligned} \quad (14)$$

Table XII. Estimation of balance-to-GDP ratio deviation, 1999:1-2010:2 ($b_{t+1,i} - b_{t+1,i}^*$)

Variable	constant	real GDP growth deviation	inflation deviation	unemployment rate deviation	investment deviation	AR(1)	Observations
Belgium	-0.3	0.75***	0.48***	-0.34**	-0.06	0.42***	23
Germany	0.53**	-0.21	0.44**	-0.3***	0.3***	0.45***	23
Greece	-4.65***	0.4*	1.47***	0.94***	0.07	0.59***	23
Spain	-0.42**	1.28***	-0.06	0.09	0.26***	0.09	23
France	-0.16	0.6***	0.57***	-0.07	-0.01	0.44***	23
Ireland	-0.79	0	1.1***	1.51***	0.56***	0.15	23
Italy	-0.48	0.37*	0.24	-0.77***	-0.06	0.62***	23
Luxembourg	1.01	-0.07	0.53***	-0.56**	0.17***	0.62***	23
Netherlands	-0.02	0.53***	-0.04	-0.63**	0.31***	0.67***	23
Austria	-0.45	-0.05	0.75**	-0.53*	0.12	0.43***	23
Portugal	-1.58**	0.4	1.42***	-0.08	-0.12	0.59***	23
Finland	0.06	0.39***	0.37**	-1.15***	-0.05	0.72***	23
Denmark	1.61**	0.51***	0.62***	-0.61**	-0.01	0.72***	23
Sweden	0.33	-0.15	-0.25	-0.46***	0.25***	0.66***	23
United Kingdom	-1.33**	0.76***	1.45***	0	0.14**	0.74***	23
European Union	-0.29	0.75***	0.55***	-0.37**	-0.1	0.49***	24
Euro Area	-0.05	0.19	0.45***	-0.2	0.19***	0.44***	23

Note: Total system (unbalanced), 392 observations. Linear estimation after one-step weighting matrix. t-statistics in brackets. *, **, *** denote significance at 10, 5 and 1% levels.

We used a AR(1) parameter in order to overtake serial correlation, however, this problem remains in about half of the cases. For example, in Spain there are three variables with statistical significance – constant (-0.42 pp), real GDP growth deviation (1.28 pp) and total investment (0.26 pp), while in Ireland there are three other variables – inflation error (1.1 pp), unemployment rate (1.51 pp) and total investment (0.56 pp).

4.2.1.3 Government Budget constraint 1999-2011

Taking into account a set of variables provided by the European Commission forecasts during the EMU period, it is possible to decompose the deviation of variation of the general government gross debt. However, it is important to stress that the data sources of the forecasts of each variable has one decimal place, which may differ a little from the real projection after some calculations. For example, the forecast of the snow ball effect considers interest expenditure, real GDP and GDP deflator (inflation when it is not available) while the stock flow adjustment is obtained by difference. Furthermore, there may be some small differences between the error for the gross debt ratio variations and the sum of the errors of the snow ball

effect, primary balance effect, and stock flow adjustments because some predictable variables were not available in some years for all countries.⁸ Again, the period under analysis covers semi-annual vintage forecasts from autumn 1999 to autumn 2010.

Table XIII presents the medium deviation (ME = realization - forecast) for the 15 Member States, the European Union and the Euro zone.⁹ Predictions were published in year t for year $t+1$, including both spring and autumn forecasts. The European Commission has predicted on average positive (negative) variations of gross debt of general government with respect to GDP in some (other) countries, however, realizations have been higher (less negative or positive) than forecasted, i.e. we may conclude that there may have been a bias – optimistic predictions. Figure 1 also illustrates those results.

Table XIII. Government Budget Constraint (medium deviations - percentage points of GDP)

<i>Country</i>	<i>$\Delta Debt$ $t+1$</i>	<i>interest effect $t+1$</i>	<i>nominal effect $t+1$</i>	<i>snow ball effect $t+1$</i>	<i>Primary Balance $t+1$</i>	<i>Stock flow $t+1$</i>
Belgium	1.10	-0.23	0.27	0.04	0.50	0.55
Germany	1.46	-0.06	0.37	0.31	0.11	1.04
Greece	6.19	0.29	1.67	1.96	4.48	-0.25
Spain	0.56	-0.12	-0.05	-0.17	1.29	-0.56
France	1.33	-0.12	0.26	0.14	0.76	0.43
Ireland	4.48	0.06	0.99	1.04	2.79	0.65
Italy	1.72	0.02	1.12	1.14	0.66	-0.09
Luxembourg	0.90	0.02	-0.02	0.00	-1.52	2.43
Netherlands	1.17	-0.21	0.28	0.07	0.67	0.43
Austria	0.66	-0.11	-0.05	-0.16	0.51	0.31
Portugal	3.41	-0.03	0.73	0.71	1.74	0.97
Finland	0.96	-0.22	0.21	-0.01	-0.11	1.08
Denmark	1.26	-0.28	0.17	-0.11	0.10	1.27
Sweden	0.60	-0.55	0.24	-0.30	0.60	0.30
United Kingdom	2.21	0.09	0.22	0.31	1.04	0.86
European Union	1.40	-0.07	0.58	0.51	0.76	0.13
Euro Area	1.40	-0.05	0.44	0.39	0.72	0.30

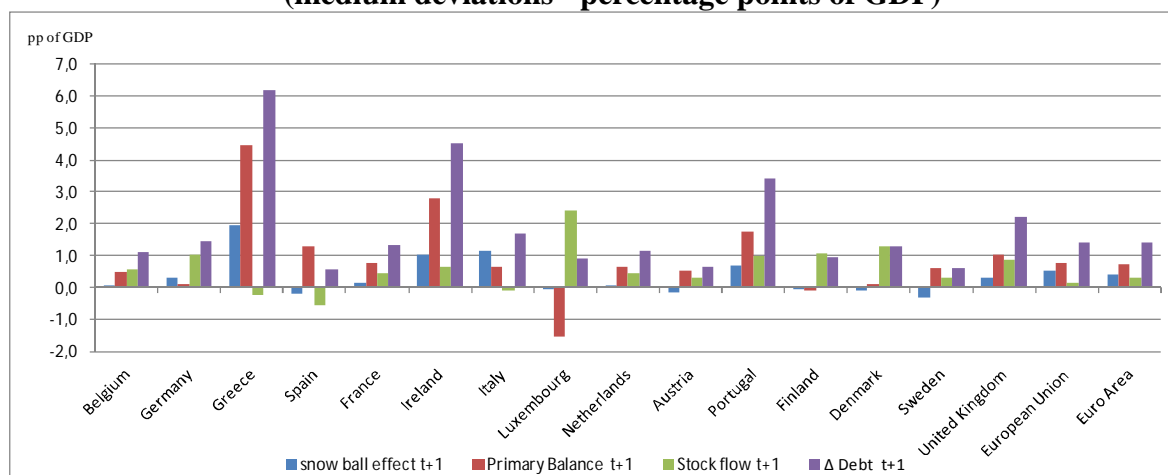
Results show that the European Commission has underestimated the positive variation of general government gross debt as percentage of GDP with a particular size in Greece, Ireland

⁸ Data for Luxembourg had not all variables in Autumn 1999.

⁹ Realizations are values downloaded from Ameco on 8 June 2012, which integrate revisions.

and Portugal, especially in the primary balance. Indeed, the EU countries that in 2012 are under IMF/EC/ECB financing support depict more important deviations. The deviation in the snow ball effect is negative or positive among countries, but close to zero (see Table XIII).

**Figure 1. Government Budget Constraint
(medium deviations - percentage points of GDP)**



The European Commission forecasts would be unbiased in case of $ME = 0$ or close to zero, however, the track record seems to show an optimistic bias. This result in the budget government constraint may be explained a little by deviation in other economic variables – nominal GDP growth and weight of interest payments as gross debt of general government (see Table XIII).

Still from Table XIII, we see that the largest debt deviations occurred from Greece, Ireland, and Portugal. In the case of Ireland there was a particular situation of financial crisis since 2009, in which deficit of general government attained 14%, 31.2% and 13% in 2009, 2010 and 2011 respectively.

4.2.1.4 Expenditure-to-GDP ratio: numerator and denominator effects

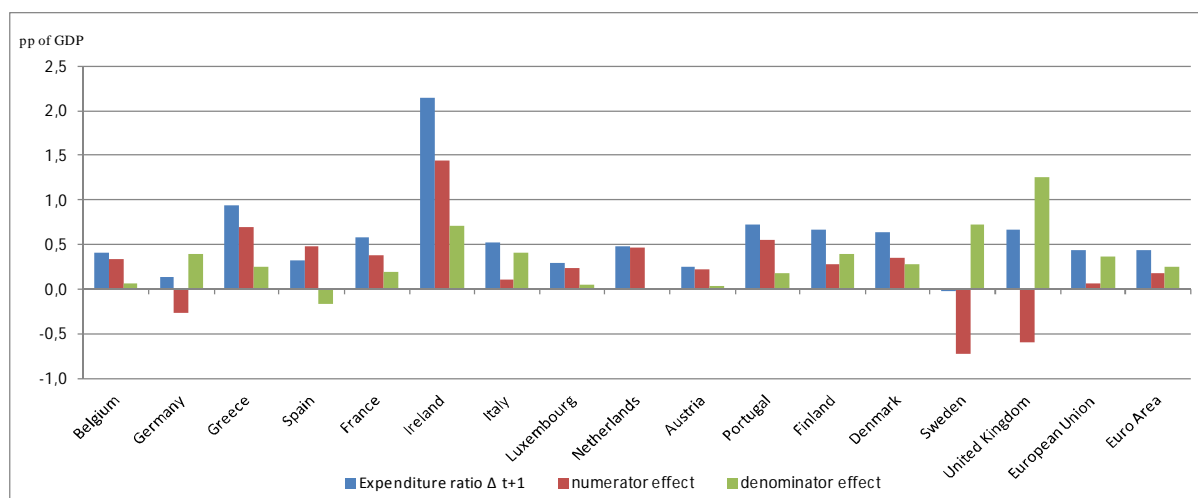
We studied the deviation of the European Commission forecasts between the realizations and predictions about yearly variation of expenditure-to-GDP, which had been projected in year t for $t+1$. The period includes the vintage forecasts from spring 1999 to autumn 2010. Table XIV and Figure 2 present the decomposition of the deviations of the expenditure-to-GDP ratios.

Table XIV. Decomposition about deviation of expenditure-to-GDP ratio

<i>Country</i>	<i>Expenditure ratio $\Delta t+1$</i>	<i>numerator effect</i>	<i>denominator effect</i>
Belgium	0.41	0.34	0.07
Germany	0.14	-0.26	0.40
Greece	0.94	0.70	0.25
Spain	0.32	0.49	-0.16
France	0.58	0.39	0.20
Ireland	2.15	1.44	0.71
Italy	0.52	0.11	0.41
Luxembourg	0.29	0.24	0.05
Netherlands	0.47	0.47	0.00
Austria	0.25	0.22	0.04
Portugal	0.72	0.55	0.18
Finland	0.67	0.28	0.40
Denmark	0.63	0.35	0.29
Sweden	0.00	-0.72	0.72
United Kingdom	0.66	-0.59	1.26
European Union	0.43	0.07	0.36
Euro Area	0.43	0.18	0.25

Since in most countries the average prediction was for negative variations of expenditure relative to GDP (with the exception of Luxembourg and the United Kingdom), we may conclude that realizations of variations have not been negative as forecasted. In fact, the reduction in spending has been much lower than the forecasted reduction, in countries like Ireland, Greece, and Portugal (see column one in Table XIV).

Figure 2. Decomposition of expenditure-to-GDP deviation



The results also suggest that the European Commission projections have initially some optimistic bias about the spending-to-GDP ratio in most countries, which afterwards is not fulfilled. This outcome is rather in line with the results of Moulin and Wiertz (2006), who studied the government forecast through the SGPs, showing the inability of governments to cut expenditure and reporting also evidence of deliberately optimistic growth forecasts in order to justify nominal spending increases.

The forecasts about decomposition of the nominal/numerator and the denominator effects were consistently, in the entire sample, i.e. a favourable path of nominal GDP and an increase of nominal expenditure, in which the denominator effect was stronger than the nominal/numerator one in most countries.

The deviations in the nominal/numerator effect in Germany, Sweden and the United Kingdom have been favourable, which means that predictions about the variation of nominal expenditure were lower than realizations while in another countries increase of nominal expenditure became higher than predicted.

In addition, deviations of the denominator effect mean that GDP nominal growth presented a lower contribution to reduce the expenditure-to-GDP ratio than predicted in most countries (an exception was Spain). Furthermore, it would still be possible to study the decomposition of nominal GDP growth between real output variation and deflator increase as mentioned before.

4.2.1.5 Revenue-to-GDP ratio: numerator and denominator effects

Again for the same period of EC vintage forecasts, from Spring 1999¹⁰ to Autumn 2010, regarding predictions in year t to year $t+1$ as before, the decomposition of revenue ratios between nominal/numerator and denominator effects does not seem to present a pattern.

Table XV presents the decomposition of the deviation about variation of revenue-to-GDP in the same way as the expenditure one, and we can see that the European Commission predictions seem to have overestimated the variation of the revenue ratios in most cases, except in Spain. The medium forecast of revenue ratio variation in this period was negative for most countries and positive in some cases (Portugal, Spain and the United Kingdom). Therefore, realizations have been as favourable as predicted.

Table XV. Decomposition about deviation of revenue-to-GDP ratio

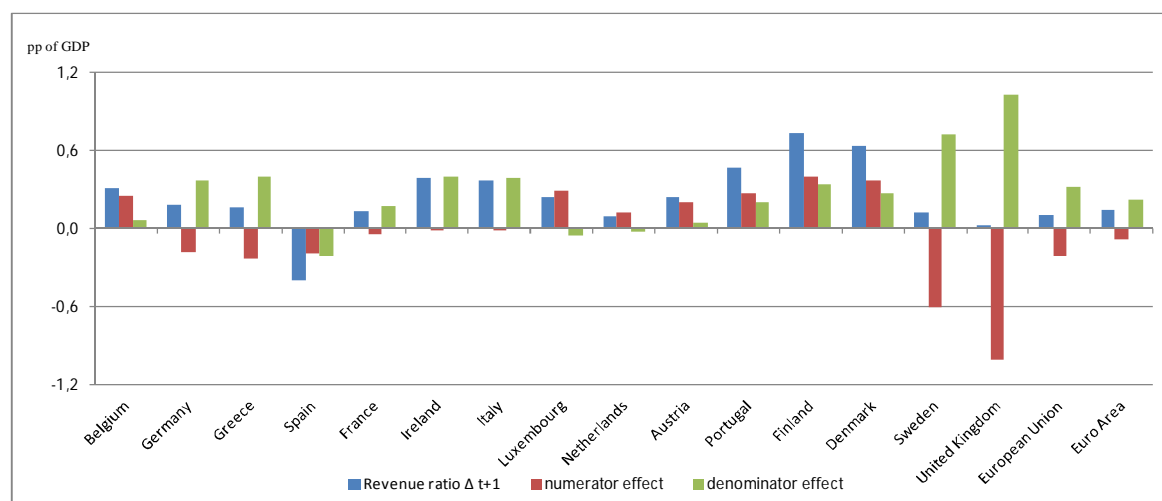
<i>Country</i>	<i>Revenue ratio $\Delta t+1$</i>	<i>numerator effect</i>	<i>denominator effect</i>
Belgium	0.31	0.25	0.06
Germany	0.18	-0.19	0.37
Greece	0.16	-0.24	0.40
Spain	-0.40	-0.19	-0.21
France	0.13	-0.04	0.17
Ireland	0.38	-0.01	0.40
Italy	0.37	-0.02	0.39
Luxembourg	0.24	0.29	-0.05
Netherlands	0.09	0.12	-0.03
Austria	0.24	0.20	0.04
Portugal	0.47	0.27	0.20
Finland	0.73	0.40	0.34
Denmark	0.64	0.37	0.27
Sweden	0.12	-0.61	0.73
United Kingdom	0.02	-1.01	1.03
European Union	0.11	-0.21	0.32
Euro Area	0.14	-0.08	0.22

The forecasts about the decomposition of the numerator and denominator effects show the same path in all countries, similarly to the case of expenditure ratios, specifically a positive path of nominal GDP and a raise of nominal revenue, in which the denominator effect would be stronger than the numerator effect in most countries (exceptions are Portugal, Spain and the United Kingdom as mentioned before).

¹⁰ Except Luxembourg.

Predictions about nominal revenue were positive on average for all countries. Therefore, we can conclude that positive (negative) deviations of the numerator effect mean that predictions about variations of nominal receipts were lower (higher) than realizations. Spain recorded nominal revenue increases lower than predicted, which contributed favourably to offset the denominator effect. Figure 3 illustrates the size of each effect.

Figure 3. Decomposition of revenue-to-GDP deviation



4.2.2 Portuguese Government forecasts

4.2.2.1 Regression analysis

In this case, we are at a national level and we should bear in mind that national authorities have private information which is not available to the international institutions (see, Merola and Pérez, 2012). Indeed, there is a better access to the relevant data and coming policy measures, which may imply favourable conditions to achieve more accurate forecasts.

Notwithstanding some tests about serial correlation explained below, regression (1) in Table XVI shows that real GDP growth deviations are statistically significant at the 1% level. Therefore, a deviation of 1 pp between real GDP growth and the predicted real GDP has a positive impact of 0.64 pp on the deviation of the budget balance ratio. In line with automatic stabilizers, a higher real GDP growth may be connected, for instance, with a lower level of social benefits and increasing revenues from social security contributions as well as increases in tax revenues. In addition, price growth deviations have a similar effect, i.e. a difference of 1 pp between realization and prediction has a positive impact on the budget balance-to-GDP ratio of 0.48 pp. In this case the positive impact of the deviation may be connected with the

imperfect tax indexation system of some taxes – especially direct ones, i.e. the taxation is defined in the State Budget in line with the prediction of nominal income. However, a higher level of income due to higher inflation would mean larger revenues for the government.

The dependent variable is the deviation of the budget balance ratio $b_t - b_t^*$ and independent ones are deviations of real GDP growth and prices variation. In the case of regression (3) there is an autocorrelation parameter AR(1).

Table XVI. Estimation for the balance-to-GDP ratio deviation, ($b_t - b_t^*$) (annual data, 1977-2011)

Variable	(1)	(2)	(3)
Constant	-0.4242 (-1.3)		-0.4075 (-0.8)
Real GDP growth deviation	0.6370*** (4.3)	0.6310*** (4.6)	0.5241*** (3.5)
Prices variation deviation	0.4818*** (5.2)	0.4416*** (5.0)	0.3639*** (4.3)
AR(1)			0.4138** (2.6)
Adjusted R-square	0.54	0.53	0.57
Observations	35	35	34

t-statistics in brackets. *, **, *** denote significance at 10, 5 and 1% levels.

In addition, it is interesting that during last two decades predictions seems to have overestimated real GDP growth and underestimated the increase of prices level, which tends to present a deviation of nominal GDP growth not so large, but with an unfavourable decomposition. It is possible to verify this result through average of deviations of real GDP growth when compared with prices variation during last two decades.

The Durbin-Watson statistics from regression (1) does not allow a clear conclusion about serial correlation (DW=1.26, in the range 1.14–1.37 of 1% significance), which is inconclusive and results should be read carefully. Therefore, we analyzed the serial correlation possibility based on the Breusch-Godfrey Serial Correlation LM Test. In Table XVII we report the probability of each lag of the residual term under the null hypothesis of no serial correlation. We can conclude that there is no correlation of residual terms of one per cent significance.

Table XVII. Breusch-Godfrey Serial Correlation LM Test, (annual data 1977-2011) H_0 : no serial correlation

Lag	Observations * R2	Probability
1	3.8	0.0510
2	4.6	0.1012
3	9.8	0.0206
4	13.1	0.0110
5	13.1	0.0223

Therefore, it is possible to analyze the impact of the independent variables through regression (3) by taking into account the non rejection of absence of serial correlation. Deviations of real GDP growth as well as prices variations remain statistically significant, however, the magnitude of each estimated coefficient is somewhat lower than in regressions (1) and (2), 0.52 pp and 0.36 pp, respectively.

4.2.2.2 Decomposition of the budget balance-to-GDP ratio

Furthermore, it is also interesting to study a decomposition of deviation about balance-to-GDP ratio, which may be explained by nominal error of balance as well as by denominator effect, obtained from the two following equations (see Moulin and Wierds, 2006, for a similar rationale):

$$B_t = B_t^* + u_t \quad (15)$$

$$GDP_t = GDP_t^* + v_t \quad (16)$$

where B_t denotes realization of nominal balance in currency, GDP_t is the realization of nominal GDP in cash, B_t^* is the prediction of balance in currency and GDP_t^* denotes the nominal GDP underlying the forecast. Furthermore, u_t and v_t are deviations in cash between realization and forecast of the nominal balance and of the nominal GDP, respectively.

However, since nominal GDP in currency, GDP_t^* is not available in state budget reports in most years and v_t would seem then impossible to find. Nevertheless, we can actually derive a decomposition of the effects. The deviation between realization and prediction of the budget balance relative to GDP may be detailed as follows:

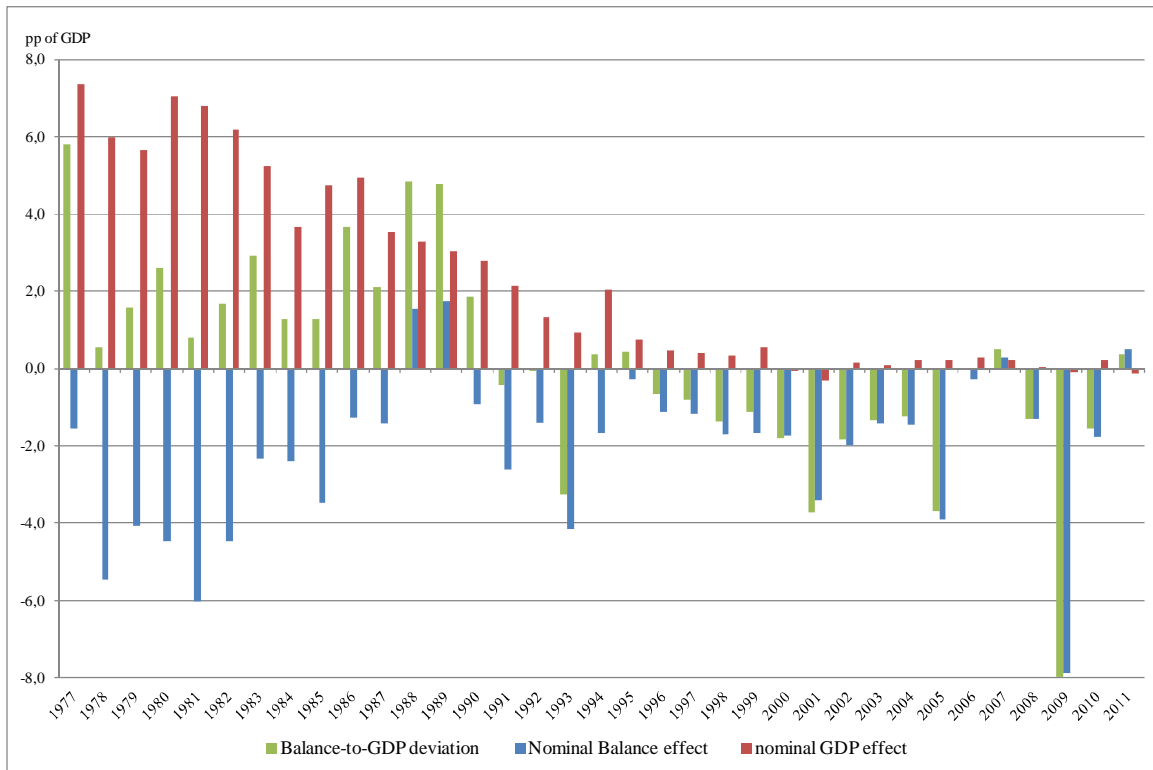
$$\frac{B_t}{GDP_t} - \frac{B_t^*}{GDP_t^*} = \frac{B_t^* + u_t}{GDP_t^* + v_t} - \frac{B_t^*}{GDP_t^*} = \frac{(B_t^* + u_t)GDP_t^* - B_t^*(GDP_t^* + v_t)}{(GDP_t^* + v_t)GDP_t^*} \quad (17)$$

$$\begin{aligned}
&= \frac{B_t^* GDP_t^* + u_t GDP_t^* - B_t^* GDP_t^* - B_t^* v_t}{(GDP_t^* + v_t) GDP_t^*} = \frac{u_t - \frac{B_t^*}{(GDP_t^*)} v_t}{(GDP_t^* + v_t)} = \\
&= \frac{u_t}{GDP_t^* + v_t} - \frac{B_t^*}{GDP_t^* + v_t} \cdot \frac{v_t}{GDP_t^*}.
\end{aligned}$$

Therefore, it is possible to identify which share of the deviation can be explained by differences in nominal balances and the impact of wrong nominal GDP forecasts, which may be explained by the inability of predicting and/or different international environment.

Figure 4 presents the decomposition of the budget balance ratio, between nominal balance and nominal GDP in percentage points. The size of the deviations of nominal GDP seems to be larger in the first half of the period, which may be connected with a feature of the Portuguese economy during the end of 1970s and 1980s – higher levels of real GDP growth and inflation, making predictions more difficult during that instable period. Until the end of the 1980s, deviations of nominal GDP seem to be stronger than the unfavourable nominal budget balance deviations.

Figure 4. Decomposition of budget balance-to-GDP deviation (based on equation (18))



In 1977 the Portuguese Government requested financial assistance to the IMF¹¹ due to budget deficits, increasing of unemployment, energy prices and inflationary pressures, as well as internal instability and a world recession. In 1983 the Portuguese Government requested again financial assistance caused by foreign high interest rates, trade imbalances and large budget deficits.

In 2009 the divergence of the budget balance ratio is almost fully explained by the deficit nominal effect, which may have been determined by an additional increase in expenditure in order to avoid a deeper recession. The supplementary budget presented in the beginning of 2009 (*Iniciativa para o Investimento e o Emprego*)¹² as well as other ways of supplementary expenditure may be examples of an attempt to avoid a larger fall of output.

The international financial and economic crisis since the subprime in USA until the sovereign debt crisis in Europe has created an instable international environment. Therefore, it has become more difficult predicting real GDP, budget balances, net exports and yields of public debt. Interest payments have increased under the debt crisis period. There is a large share of gross debt which had been issued through Fixed Rate Bond (OT) before 2008 as well as the exchange of long term securities that mature in favour of new short-run securities – Treasury Bills (BT) had allowed containing the rise of interest payments during some time.

Furthermore, we should bear in mind that some budgetary targets were attained in some years (or the nominal balance deviations were close to the targets in other ones) because Governments used some temporary measures in order to achieve the budgetary commitments, which have been taken in the State Budget Law even during the year of budget implementation in some cases. For example, *CTT* in 2003 (0.9% of GDP), *CGD*, *ANA* and *Casa da Moeda* in 2004 (2.0%), *PT Comunicações* (1.6%) and some pension funds of banking system in 2011 (3.5%).¹³

Figure 5 presents deviations in percentage points of GDP between realization and forecast of both general government balance ratio and temporary measures for the period 2000-2011 as a percentage of GDP. The source of the data concerning temporary measures is the *Relatório do Conselho de Administração - A Economia Portuguesa em 2011*, which contains some

¹¹ <http://www.imf.org/external/lang/portuguese/np/exr/countryfacts/prt/index.htm>

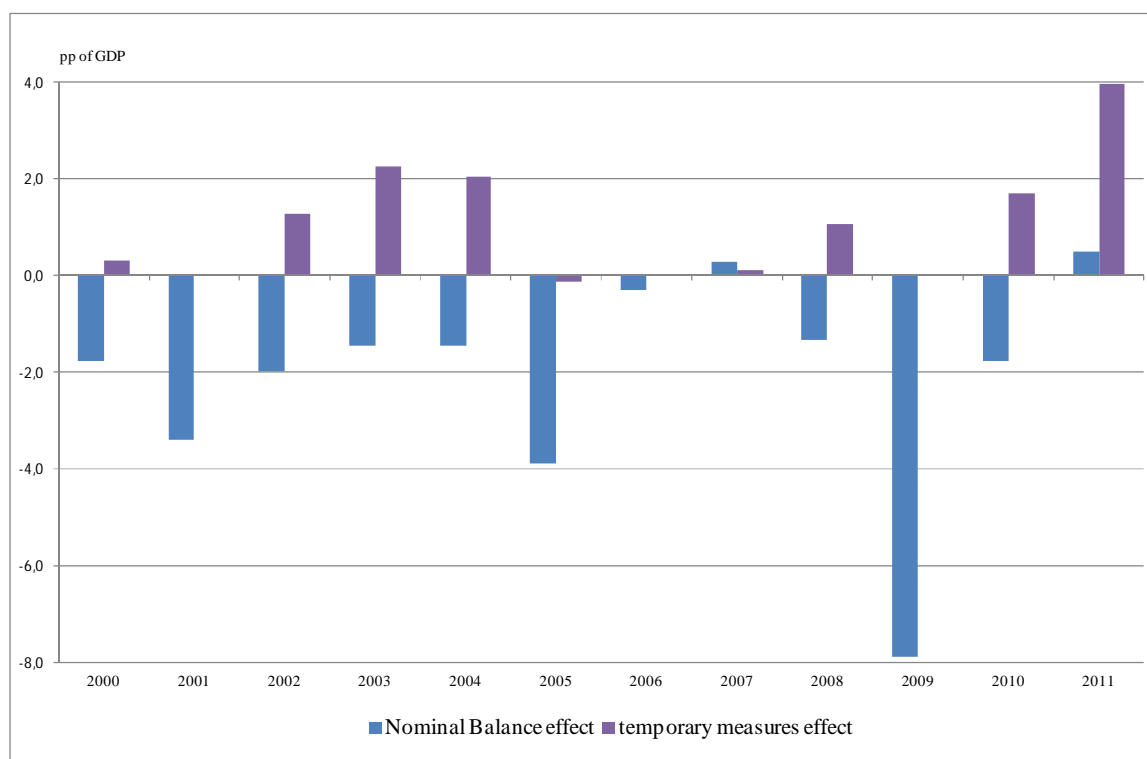
¹² However, it was not implemented totally.

¹³ *CTT* – Correios de Portugal, *CGD* - Caixa Geral de Depósitos, *ANA* - Aeroportos de Portugal.

temporary measures that had been scheduled during the initial State Budget Law. One-off and temporary measures according to the Eurosystem definition include, for example, sales of non-financial assets and revenues resulting from the transfers of pensions to the general government.

Fiscal rules for the budget balance ratio based on potential output would be biased because, as already mentioned, there have been successive revisions of the output gap (Kempkes, 2012). In the Portuguese case, when we analyzed the last two decades, it could have drawn wrong conclusions because the final results of the balance-to-GDP ratio have been worse than the first estimates of the European Commission, which may be explained not only by output gap revisions, but also nominal balance revisions. See Appendix Table A6.

Figure 5. Nominal Balance deviation and temporary measures



5 Conclusion

In this thesis we have found evidence of systematic deviations in the forecasts underlying the budget balance-to-GDP ratios. In the case of the European Commission forecasts, our estimations allow the conclusion that the real GDP growth deviation and prices variation can explain budget deficit deviations when predicted in t to year $t+1$.

Indeed, higher real GDP than predicted has a positive impact on taxes' revenue and expenditure through automatic stabilizers, while higher inflation can influence budget balances through the imperfect tax indexation system. The deviation of total investment growth has also a statistical significance, revealing a positive deviation, and therefore a favourable impact on the budget balance. On the other hand, unemployment rate deviations do not present relevant impact on budget balance-to-GDP.

The fiscal rules index has a statistical significance for the period 1990-2010 in the case of an unbalanced panel and absence of fixed effects, i.e. higher performance of fiscal rules has a positive impact on budget balance-to-GDP deviations. The fiscal rule index may be a way to overcome specific features of each country, which would be estimated through fixed effects in the absence of the fiscal rules indicator.

The SUR estimations allow identifying the variables with impact on the budget balance deviation in each country. There are differences about significance and magnitude of parameters among countries.

Our estimations based in the Portuguese official forecasts imply that wrong or optimistic assumptions about growth and prices are risky factors with negative impact on the budgetary outcomes. Our estimation results suggest that a 1 pp deviation of real GDP growth or prices variation has a relevant impact on budget balance ratio. The correlation between the studied economic variables, real GDP, and prices variation with the dependent variable deviation balance-to-GDP ratio seems reasonable, i.e. in case of accurate independent variables forecasts, the target of balance-to-GDP ratio seems attainable. Therefore, the credibility of the Portuguese fiscal policy, which may had spilled over to the financial and capital markets, may be based on less realistic assumptions about the variation of real GDP and prices.

Moreover, the budget balance ratio error can be decomposed into a numerator and a denominator effect. Our evidence suggests that there has been an unfavourable error about the numerator effect (i.e. the budget balance in nominal currency) in most years, which has been offset (totally or partially) by a favourable denominator effect connected with nominal GDP (when there is an under-estimation of nominal GDP there is a positive effect of GDP in the deviation of the budget balance).

References

- Afonso, A. (2010). Long-term government bond yields and economic forecasts: evidence for the EU. *Applied Economics Letters*, 17 (15), 437-441.
- Annett, A. (2006). Enforcement and the Stability and Growth act: How Fiscal Policy Did and Did Not Change Under Europe's Fiscal Framework. IMF Working Paper No. 06/116.
- Artis, M., & Marcellino, M. (2001). Fiscal forecasting: the track record of the IMF, OECD and EC, *Econometrics Journal*, 4(1), S20-S36.
- Banco de Portugal. *Relatório do Conselho de Administração - A Economia Portuguesa em 2011*. Banco de Portugal.
- Brück, T., & Stephan, A. (2005). Do Eurozone Countries Cheat with their Budget Deficit Forecasts? DIW, Discussion Paper 508.
- Castro, F. , Pérez, J. J. & Rodríguez-Vives, M. (2011). Fiscal data revisions in Europe. European Central Bank, Working Paper 1342.
- von Hagen, J. (2010). Sticking to fiscal plans: the role of institutions. *Public Choice* , 144(3), 487-503.
- Kempkes, G. (2012). Cyclical adjustment in fiscal rules: some evidence on real-time bias for EU-15 countries. Deutsche Bundesbank, Working Paper 15/2012.
- Marinheiro, C. F. (2010). Fiscal sustainability and the accuracy of macroeconomic forecasts: do supranational forecasts rather than government forecasts make a difference? *Journal of Sustainable Economy* 3(2), 185-209.
- Martins, P. S. (2012). Macroeconomic forecasts and fiscal discipline: the European case. PhD Thesis, Universidade de Trás-os-Montes e Alto Douro, Vila Real.
- Melander, A., Sismanidis, G., & Grenouillea, D. (2007). The track record of the Commission's forecasts - an update. European Commission, DG ECFIN, Economic Paper 291.
- Merola, R., & Pérez, J. (2012). Fiscal forecast errors: governments vs independent agencies?, Banco de España Working Paper 1233.
- Moulin, L., & Wierds, P. (2006). How credible are multiannual budgetary plans in the EU? *Fiscal Indicators*. Perugia: Banca d'Italia.
- Pina, Álvaro, & Venes, Nuno. (2011). The Political Economy of EDP Fiscal Forecasts: An Empirical Assessment, *European Journal of Political Economy*, 27(3), 534-546.
- Strauch, R., Hallerberg, M., & von Hagen, J. (2004). Budgetary forecasts in Europe - the track record of stability and convergence programmes. ECB Working Paper 307.

Appendix

Table A1. Estimation for the first difference of the budget balance-to-GDP ratio deviation, 1969-2011, $\Delta(b_{t+1} - b_{t+1}^*)$ (two stage least squares)

Variable	(1)	(2)	(3)
constant	0.0059 (0.9)	0.0044 (0.7)	0.0065 (0.8)
Δ real GDP growth deviation	0.3791*** (7.8)	0.3914*** (7.0)	0.3877*** (7.5)
Δ investment growth deviation	0.1028*** (8.3)	0.1057*** (7.9)	0.1232*** (13.5)
Δ inflation deviation	0.2843** (2.3)	0.2903** (2.4)	0.3004** (2.5)
Δ unemployment rate deviation		0.0742 (0.6)	0.0973 (0.8)
Δ current account deviation			0.0662** (2.4)
Estimate of Δ real GDP growth deviation	-0.0832 (-0.7)	-0.0926 (-0.7)	-0.1043 (-0.7)
AR(1)	-0.3347*** (-6.4)	0.3334*** (-7.1)	-0.3400*** (-7.3)
Adjusted R-square	0.36	0.36	0.37
Observations	480	479	470
Period	1974-2011	1974-2011	1974-2011

Notes: fixed effects. t-statistics in brackets. *, **, *** denote significance at 10, 5 and 1% levels.

Table A2. Estimation for the budget balance-to-GDP ratio deviation, 1969-2011, $(b_{t+1} - b_{t+1}^*)$ (two stage least squares)

Variable	(1)	(2)	(3)
constant	0.1342 (1.5)	0.1361 (1.5)	0.1296 (1.3)
real GDP growth deviation	0.3946*** (10.1)	0.3715*** (8.5)	0.3644*** (9.0)
investment growth deviation	0.0983*** (5.3)	0.0977*** (5.2)	0.1123*** (6.5)
inflation deviation	0.2164** (2.5)	0.2032** (2.4)	0.2084** (2.5)
unemployment rate deviation		-0.050 (0.-9)	-0.0835 (-0.8)
current account deviation			0.0567*** (2.8)
Estimate of real GDP growth deviation	0.3143 (1.1)	0.4296 (1.6)	0.4025 (1.4)
AR(1)	0.2746*** (11.3)	0.2671*** (9.4)	0.2690*** (11.2)
Adjusted R-square	0.39	0.39	0.39
Observations	497	496	488
Period	1973-2011	1973-2011	1973-2011

Notes: fixed effects. t-statistics in brackets. *, **, *** denote significance at 10, 5 and 1% levels.

Table A3. Estimation for the budget balance-to-GDP ratio deviation, 1998:1-2010:2, $(b_{t+1} - b_{t+1}^*)$ (instrumental variables)

Variable	(1)	(2)	(3)	(4)
constant	-0.6909*** (-3.4)	-0.6091*** (-3.8)	-0.5685*** (-4.8)	-0.2646 (-1.4)
real GDP growth deviation	0.4136*** (5.3)	0.1330 (0.8)	0.1618 (1.1)	0.4344*** (5.1)
investment growth deviation		0.1760** (2.0)	0.1642*** (2.7)	
inflation deviation	0.6985*** (4.2)	0.7058*** (4.3)	0.7029*** (4.7)	0.7298*** (5.0)
unemployment rate deviation	-0.1630 (-0.6)	-0.0377 (-0.1)		
balance-to-GDP in t0	-0.0280 (-0.1)	-0.1141 (-0.5)		
Fiscal rules index				-0.5474*** (-2.8)
Estimate of real GDP growth deviation	-0.0203 (-0.3)	-0.0067 (-0.1)	-0.0023 (-0.0)	-0.0345 (-0.4)
AR(1)	0.5962*** (9.3)	0.5966*** (10.6)	0.5567*** (10.1)	0.6026*** (18.0)
Adjusted R-square	0.69	0.71	0.72	0.68
Observations	391	391	391	391
Period	1999:2- 2010:2	1999:2- 2010:2	1999:2- 2010:2	1999:2- 2010:2

Notes: fixed effects. t-statistics in brackets. *, **, *** denote significance at 10, 5 and 1% levels.

Table A4. Estimation for the budget balance-to-GDP ratio deviation, 1998:1-2010:2, $(b_{t+1} - b_{t+1}^*)$ (two stage least squares)

Variable	(1)	(2)	(3)	(4)
constant	-0.6909*** (-3.4)	-0.6091*** (-3.8)	-0.5685*** (-4.8)	-0.2646 (-1.4)
real GDP growth deviation	0.4136*** (5.3)	0.1330 (0.8)	0.1618 (1.1)	0.4344*** (5.1)
investment growth deviation		0.1760** (2.0)	0.1642*** (2.8)	
inflation deviation	0.6985*** (4.2)	0.7058*** (4.3)	0.7029*** (4.7)	0.7298*** (5.0)
unemployment rate deviation	-0.1630 (-0.6)	-0.0377 (-0.1)		
balance-to-GDP in t0	-0.0280 (-0.1)	-0.1141 (-0.4)		
Fiscal rules index				-0.7459*** (-2.8)
Estimate of real GDP growth deviation	-0.0206 (-0.3)	-0.0067 (-0.1)	-0.0023 (-0.0)	-0.0354 (-0.4)
AR(1)	0.5962*** (9.3)	0.5966*** (10.6)	0.5567*** (10.2)	0.5026*** (18.0)
Adjusted R-square	0.69	0.72	0.72	0.68
Observations	391	391	391	345
Period	1999:2- 2010:2	1999:2- 2010:2	1999:2- 2010:2	1999:2- 2010:2

Notes: fixed effects. t-statistics in brackets. *, **, *** denote significance at 10, 5 and 1% levels.

Table A5. Decomposition of balance-to-GDP ratio

Year	Balance-to-GDP deviation	Balance effect	GDP effect	<i>temporary measures effect</i>
1977	5,8	-1,5	7,4	<i>n.a.</i>
1978	0,5	-5,4	6,0	<i>n.a.</i>
1979	1,6	-4,1	5,6	<i>n.a.</i>
1980	2,6	-4,5	7,0	<i>n.a.</i>
1981	0,8	-6,0	6,8	<i>n.a.</i>
1982	1,7	-4,5	6,2	<i>n.a.</i>
1983	2,9	-2,3	5,2	<i>n.a.</i>
1984	1,3	-2,4	3,7	<i>n.a.</i>
1985	1,3	-3,5	4,7	<i>n.a.</i>
1986	3,7	-1,3	4,9	<i>n.a.</i>
1987	2,1	-1,4	3,5	<i>n.a.</i>
1988	4,8	1,6	3,3	<i>n.a.</i>
1989	4,8	1,8	3,0	<i>n.a.</i>
1990	1,8	-0,9	2,8	<i>n.a.</i>
1991	-0,5	-2,6	2,1	<i>n.a.</i>
1992	-0,1	-1,4	1,3	<i>n.a.</i>
1993	-3,3	-4,2	0,9	<i>n.a.</i>
1994	0,4	-1,7	2,1	<i>n.a.</i>
1995	0,8	-0,3	1,1	<i>n.a.</i>
1996	-0,3	-1,1	0,8	<i>n.a.</i>
1997	-0,5	-1,2	0,7	<i>n.a.</i>
1998	-1,0	-1,7	0,7	<i>n.a.</i>
1999	-0,7	-1,7	1,0	<i>n.a.</i>
2000	-1,4	-1,8	0,3	<i>0,3</i>
2001	-3,2	-3,4	0,2	-
2002	-1,3	-2,0	0,6	<i>1,3</i>
2003	-0,7	-1,4	0,7	<i>2,3</i>
2004	-0,6	-1,4	0,8	<i>2,0</i>
2005	-3,1	-3,9	0,8	<i>-0,1</i>
2006	0,5	-0,3	0,8	-
2007	0,5	0,3	0,2	<i>0,1</i>
2008	-1,3	-1,3	0,0	<i>1,1</i>
2009	-8,0	-7,9	-0,1	-
2010	-1,5	-1,8	0,3	<i>1,7</i>
2011	-1,2	0,5	-1,7	<i>4,0</i>

Source: Portuguese official forecasts, AMECO and *Banco de Portugal*.

Table A6. Budget balance ratio: from forecasts to final results

year	Budget	Forecast (current year)	Forecast (year ahead)	First estimates (Spring)	First estimates (Autunm)	Final results
1977	-8.7	n.a.	n.a.	n.a.	n.a.	-2.8
1978	-7.7	n.a.	n.a.	n.a.	n.a.	-7.1
1979	-7.7	n.a.	n.a.	n.a.	n.a.	-6.1
1980	-9.5	n.a.	n.a.	n.a.	n.a.	-6.9
1981	-9.1	n.a.	n.a.	n.a.	n.a.	-8.3
1982	-8.7	n.a.	n.a.	n.a.	n.a.	-7.0
1983	-7.8	n.a.	n.a.	n.a.	n.a.	-4.9
1984	-6.5	n.a.	n.a.	n.a.	n.a.	-5.2
1985	-9.6	n.a.	n.a.	n.a.	n.a.	-8.3
1986	-11.1	-11.2	n.a.	-8.5	n.a.	-7.4
1987	-8.9	-9.0	-7.5	-8.1	-8.4	-6.8
1988	-8.4	-7.9	-7.8	-6.6	-6.5	-3.5
1989	-7.7	-6.3	-7.8	-5.0	-3.8	-2.9
1990	-7.9	-7.4	-6.1	-5.8	-5.8	-6.1
1991	-6.5	-5.5	-5.6	-6.4	-6.4	-6.9
1992	-4.3	-5.4	-4.6	-5.4	-5.2	-4.4
1993	-4.2	-5.7	-4.8	-7.1	-7.2	-7.4
1994	-7.5	-6.2	-8.2	-5.8	-5.8	-7.1
1995	-5.8	-5.6	-5.8	-5.4	-5.1	-5.4
1996	-4.2	-4.4	-4.7	-4.1	-3.2	-4.8
1997	-2.9	-3.0	-2.9	-2.5	-2.5	-3.7
1998	-2.5	-2.2	-2.4	-2.3	-1.5	-3.9
1999	-2.0	-2.0	-2.0	-2.0	-2.0	-3.1
2000	-1.5	-1.5	-1.2	-1.4	-1.5	-3.3
2001	-1.1	-1.5	-1.4	-2.7	-4.1	-4.8
2002	-1.6	-2.6	-1.6	-2.7	-2.7	-3.4
2003	-2.4	-3.5	-2.9	-2.8	-2.8	-3.7
2004	-2.8	-3.4	-3.3	-2.9	-3.0	-4.0
2005	-2.8	-4.9	-3.7	-6.0	-6.0	-6.5
2006	-4.6	-5.0	-5.0	-3.9	-3.9	-4.6
2007	-3.7	-3.5	-4.0	-2.6	-2.6	-3.2
2008	-2.4	-2.2	-2.6	-2.6	-2.7	-3.7
2009	-2.2	-6.5	-2.8	-9.4	-9.3	-10.2
2010	-8.3	-8.5	-8.0	-9.1	-9.8	-9.8
2011	-4.6	-5.9	-4.9	-4.2	n.a.	-4.2

Source: Portuguese official forecasts, semi-annual vintage forecasts from the European commission and AMECO.

Table A7. Portuguese official forecast - details

Variable (source)	Source	Publication date	Predicted year	Table Vs Text	Remarks
real GDP	State Budget report	Oct-10	2011	table	accrual basis
Balance - General Government	State Budget report	Oct-10	2011	table	
GDP deflator	State Budget report	Oct-10	2011	table	
Consumer prices	State Budget report	Oct-10	2011	table	
real GDP	State Budget report	Jan-10	2010	table	accrual basis
Balance - General Government	State Budget report	Jan-10	2010	table	
GDP deflator	State Budget report	Jan-10	2010	table	
Consumer prices	State Budget report	Jan-10	2010	table	
real GDP	State Budget report	Oct-08	2009	table	accrual basis
Balance - General Government	State Budget report	Oct-08	2009	table	
GDP deflator	State Budget report	Oct-08	2009	table	
Consumer prices	State Budget report	Oct-08	2009	table	
real GDP	State Budget report	Oct-07	2008	table	accrual basis
Balance - General Government	State Budget report	Oct-07	2008	table	
GDP deflator	State Budget report	Oct-07	2008	table	
Consumer prices	State Budget report	Oct-07	2008	table	
real GDP	State Budget report	Oct-06	2007	table	accrual basis
Balance - General Government	State Budget report	Oct-06	2007	table	
GDP deflator	State Budget report	Oct-06	2007	table	
Consumer prices	State Budget report	Oct-06	2007	table	
real GDP	State Budget report	Oct-05	2006	table	accrual basis
Balance - General Government	State Budget report	Oct-05	2006	table	
GDP deflator	State Budget report	Oct-05	2006	table	
Private consumption	State Budget report	Oct-05	2006	table	
real GDP	State Budget report	Oct-04	2005	table	average range
Balance - General Government	State Budget report	Oct-04	2005	table	accrual basis
GDP deflator	State Budget report	Oct-04	2005	table	average range
Private consumption	State Budget report	Oct-04	2005	table	average range
real GDP	State Budget report	Oct-03	2004	table	average range
Balance - General Government	State Budget report	Oct-03	2004	table	accrual basis
GDP deflator	State Budget report	Oct-03	2004	table	average range
Private consumption	State Budget report	Oct-03	2004	table	average range
real GDP	State Budget report	Oct-02	2003	table	average range
Balance - General Government	State Budget report	Oct-02	2003	table	accrual basis
GDP deflator	State Budget report	Oct-02	2003	table	average range
Private consumption	State Budget report	Oct-02	2003	table	average range
real GDP	State Budget report	Oct-01	2002	table	average range
Balance - Administrative Public Sector	State Budget report	Oct-01	2002	table	cash basis
GDP deflator	State Budget report	Oct-01	2002	table	average range
Private consumption	State Budget report	Oct-01	2002	table	average range
real GDP	State Budget report	Oct-00	2001	table	average range
Balance - Administrative Public Sector	State Budget report	Oct-00	2001	table/text	cash (accrual) basis for nominal (ratio)
GDP deflator	State Budget report	Oct-00	2001	table	average range
Private consumption	State Budget report	Oct-00	2001	table	average range
real GDP	State Budget report	Jan-00	2000	table	cash (accrual) basis for nominal (ratio)
Balance - Administrative Public Sector	State Budget report	Jan-00	2000	table/text	
GDP deflator	State Budget report	Jan-00	2000	table	
Private consumption	State Budget report	Jan-00	2000	table	
real GDP	State Budget report	Oct-98	1999	table	average range
Balance - Administrative Public Sector	State Budget report	Oct-98	1999	table	cash basis and macroeconomic cenario
GDP deflator	State Budget report	Oct-98	1999	table	average range
Private consumption	State Budget report	Oct-98	1999	table	average range
real GDP	State Budget report	Oct-97	1998	table	cash basis
Balance - Administrative Public Sector	State Budget report	Oct-97	1998	table	
GDP deflator	State Budget report	Oct-97	1998	table	
Private consumption	State Budget report	Oct-97	1998	table	
real GDP	State Budget report	-	1997	table	accrual basis
Balance - Administrative Public Sector	State Budget report	-	1997	table	
GDP deflator	State Budget report	-	1997	table	
Private consumption	State Budget report	-	1997	table	
real GDP	State Budget report	-	1996	table	cash basis
Balance - Administrative Public Sector	State Budget report	-	1996	table	
GDP deflator	State Budget report	-	1996	table	
Private consumption	State Budget report	-	1996	table	
real GDP	State Budget report	-	1995	table	cash basis
Balance - Administrative Public Sector	State Budget report	-	1995	table	
GDP deflator	State Budget report	-	1995	table	
Consumer prices	State Budget report	-	1995	table	

Source: Portuguese official forecasts.

Table A7. Portuguese official forecast - details

Variable (source)	Source	Publication date	Predicted year	Table Vs Text	Remarks
real GDP	State Budget report	-	1994	table	
Balance - Administrative Public Sector	State Budget report	-	1994	table	
GDP deflator	State Budget report	-	1994	table	
Private consumption	State Budget report	-	1994	table	
real GDP	State Budget report	-	1993	table	
Balance - Administrative Public Sector	State Budget report	-	1993	table	
GDP deflator	State Budget report	-	1993	table	
Private consumption	State Budget report	-	1993	table	
real GDP	State Budget report	-	1992	table	
Balance - Administrative Public Sector	State Budget report	-	1992	table	
GDP deflator	State Budget report	-	1992	table	
Private consumption	State Budget report	-	1992	table	
real GDP	State Budget report	-	1991	table	
Balance - Administrative Public Sector	State Budget report	-	1991	table	
GDP deflator	State Budget report	-	1991	table	
Private consumption	State Budget report	-	1991	table	
real GDP	State Budget report	-	1990	table	
Balance - Administrative Public Sector	State Budget report	-	1990	table	
GDP deflator	State Budget report	-	1990	n.a.	
Consumer prices	State Budget report	-	1990	table	
real GDP	State Budget report	-	1989	table	
Balance - Administrative Public Sector	State Budget report	-	1989	table	
GDP deflator	State Budget report	-	1989	n.a.	
Private consumption	State Budget report	-	1989	table	
real GDP	<i>Grandes Opções do Plano</i>	26-Jan-88	1988	table	
Balance - Administrative Public Sector	State Budget report	-	1988	table	
GDP deflator	<i>Grandes Opções do Plano</i>	26-Jan-88	1988	table	
Private consumption	<i>Grandes Opções do Plano</i>	26-Jan-88	1988	table	
real GDP	State Budget report	-	1987	table	
Balance - State Subsector	State Budget report	-	1987	table	cash basis
GDP deflator	State Budget report	-	1987	table	
Private consumption	State Budget report	-	1987	table	
real GDP	State Budget report	-	1986	text	
Balance - Administrative Public Sector	State Budget report	-	1986	table	
GDP deflator	State Budget report	-	1986	text	
Private consumption	State Budget report	-	1986	text	
real GDP	State Budget report	-	1985	table	
Balance - State Subsector	State Budget report	-	1985	calculations	cash basis
GDP deflator	State Budget report	-	1985	table	
Private consumption	State Budget report	-	1985	table	
real GDP	<i>Grandes Opções do Plano</i>	Dec-83	1984	table	
Balance - Administrative Public Sector	<i>Grandes Opções do Plano</i>	Dec-83	1984	text	accrual basis
GDP deflator	<i>Grandes Opções do Plano</i>	Dec-83	1984	table	
Private consumption	<i>Grandes Opções do Plano</i>	Dec-83	1984	table	
real GDP	<i>Grandes Opções do Plano 1981-1984</i>	06-May-81	1983	table	
Balance - Administrative Public Sector	<i>Decreto-Lei</i>	28-Feb-83	1983	text	accrual basis
GDP deflator	<i>Grandes Opções do Plano 1981-1984</i>	06-May-81	1983	table	
Private consumption	<i>Grandes Opções do Plano 1981-1984</i>	06-May-81	1983	table	
real GDP	<i>Grandes Opções do Plano</i>	31-Dec-81	1982	table	
Balance - Administrative Public Sector	<i>Grandes Opções do Plano</i>	31-Dec-81	1982	text	accrual basis
GDP deflator	<i>Grandes Opções do Plano</i>	31-Dec-81	1982	table	
Private consumption	<i>Grandes Opções do Plano</i>	31-Dec-81	1982	table	
real GDP	<i>Grandes Opções do Plano</i>	06-May-81	1981	table	
Balance - Administrative Public Sector	<i>Decreto-Lei</i>	29-Apr-81	1981	calculations	accrual basis
GDP deflator	<i>Grandes Opções do Plano</i>	06-May-81	1981	table	
Private consumption	<i>Grandes Opções do Plano</i>	06-May-81	1981	table	
real GDP	<i>Grandes Opções do Plano</i>	28-May-80	1980	table	
Balance - Administrative Public Sector	<i>Decreto-Lei</i>	09-Jun-80	1980	calculations	accrual basis
GDP deflator	<i>Grandes Opções do Plano</i>	28-May-80	1980	table	
Private consumption	<i>Grandes Opções do Plano</i>	28-May-80	1980	table	
real GDP	<i>Previsões Macroeconómicas (DCP)</i>	Oct-79	1979	table	
Balance - Administrative Public Sector	<i>Decreto-Lei</i>	30-Jun-79	1979	calculations	accrual basis
GDP deflator	<i>Previsões Macroeconómicas (DCP)</i>	Oct-79	1979	table	
Private consumption	<i>Previsões Macroeconómicas (DCP)</i>	Oct-79	1979	table	
real GDP	<i>Grandes Opções do Plano</i>	08-Jun-78	1978	table	
Balance - Public Sector	<i>Decreto-Lei</i>	26-Apr-78	1978	text	
GDP deflator	<i>Grandes Opções do Plano</i>	08-Jun-78	1978	calculations	
Private consumption	<i>Grandes Opções do Plano</i>	08-Jun-78	1978	calculations	
real GDP	<i>Plano para 1977</i>	31-Dec-76	1977	text	
Balance - Public Sector	<i>Decreto-Lei</i>	31-Dec-76	1977	calculations	
GDP deflator	<i>Plano para 1977</i>	31-Dec-76	1977	calculations	
Private consumption	<i>Decreto-Lei</i>	31-Dec-76	1977	text	

Source: Portuguese official forecasts.