
Welcome Guide

2024/2025



Lisbon School
of Economics
& Management
Universidade de Lisboa

U LISBOA

UNIVERSIDADE
DE LISBOA



WELCOME TO THE NEXT LEVEL.





Lisbon School
of Economics
& Management



Message from the Dean

“

Welcome to ISEG Lisbon!

It is with great satisfaction that we welcome you to ISEG! We are sure that your time at this century-old school will be truly transformative.

ISEG has a long tradition in teaching economics and management in Portugal and has educated a major part of the elite decision-makers in economics and management.

We were the first school of Economics and Management to be founded in Portugal and are an integral part of the country's largest university, Universidade de Lisboa, which is ranked in the top position among Portuguese universities in most international rankings.

Our top-tier education meets the highest international standards, recognised by international the education bodies - EQUIS, AACSB, and AMBA and rankings such as the Financial Times, and is based on a culture of permanent innovation and continuous collaboration between students, faculty, and for-profit and non-profit organisations. This strong reputation has its origins in the quality of our graduates and faculty, as well as in our research and the impact of our activities in the community around us.

At ISEG there is always room for new ideas and being a student here guarantees access to an excellent teaching faculty, magnificent conditions for studying, and an impressive spirit of camaraderie among students! At ISEG we use our hands rather than our elbows to assist those in our team who are our colleagues – in a group, in a lecture, during a year, or at ISEG, whatever the year or study cycle!

At ISEG we feel a sense of obligation to educate people and to make them grow in technical and scientific knowledge, also respecting the School's values and principles which guarantee a space for affirming identity and individual opinion. We want our students to continue to be unique, more than being excellent economists or managers who will go on to change the world!

Now's the time to get make your dream happen and to continue the legacy of those who have gone before you, contributing to ensure that ISEG remains where it belongs – as the school of Economics and Management that has educated most of the elite of Portugal's decision-makers in the fields of economics and management.

We're counting on you!

João Duque

João Duque
Dean of ISEG

”

Academic Calendar

2024 / 2025

	Time / Period	From	Till
1 ST SEMESTER	Welcome Week	02/09/2024	06/09/2024
	Lectures *	09/09/2024	29/11/2024
	Masters and PhDs Graduation Ceremony **	26/09/2024	
	Undergraduates Graduation Ceremony **	27/09/2024	
	Career Forum ***	06/11/2024	07/11/2024
	Regular Assessment Period	05/12/2024	21/12/2024
	Christmas Holidays	22/12/2024	05/01/2025
	Repeat Assessment Period	06/01/2025	11/01/2025
	Time / Period	From	Till
2 ND SEMESTER	Lectures	27/01/2025	30/04/2025
	Carnival holidays	01/03/2025	04/03/2025
	Easter holidays	12/04/2025	21/04/2025
	Regular assessment period	07/05/2025	22/05/2025
	ISEG Day	23/05/2025	
	Repeat assessment period	02/06/2025	07/06/2025
	Special assessment period*	30/06/2025	05/07/2025

* With the exception of the Masters in Actuarial Science and Management, which start classes on 2 September.

** Subject to confirmation.

*** Classes continue without interruption.

Last update: 21 of February 2024. Calendar subject to updates. Check [here](#)

Ready to get to know ISEG?

ISEG is not just a School. We are in our 113rd year and continue to reflect and mature, from half-past eight in the morning to midnight, be it during a finance lecture in the morning, or drinking a coffee, or having lunch at the kiosk. Or it could be when strolling around the Madragoa neighbourhood in Santos, and, indeed, the whole city of Lisbon, or doing an “all-nighter” in the Library with your study group or to revise for an upcoming test. Many say we have the best academic environment in Lisbon, which we do not deny! At ISEG you'll build lifelong friendships with fellow students who share your passions and interests and help expand your perspectives on the world. If you want to broaden your student life by being involved in extracurricular activities, cultural events, or sports, then you're at the right place to expand your world.



Student Services

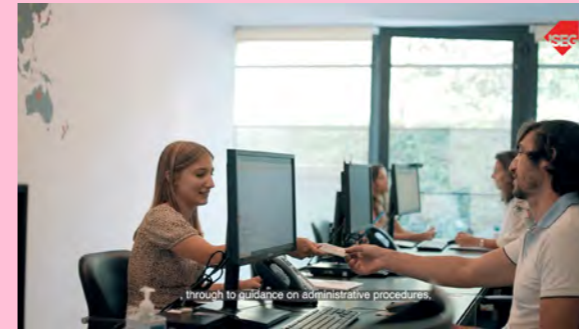
Discover student services through the videos we've prepared for you.



Click to watch full version!

Academic Services

The Academic Services are responsible for the administrative management of all academic matters affecting students.



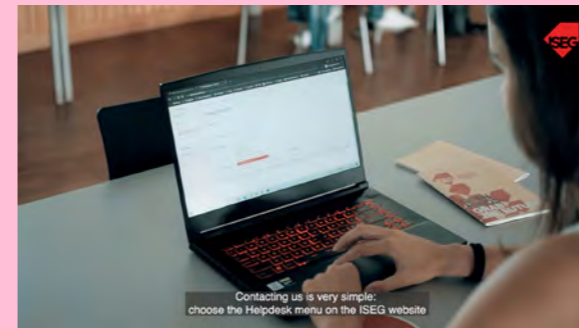
International Mobility Office

If you want to study abroad, The International Mobility Office, IMO, will support you, before, during, and after your mobility.



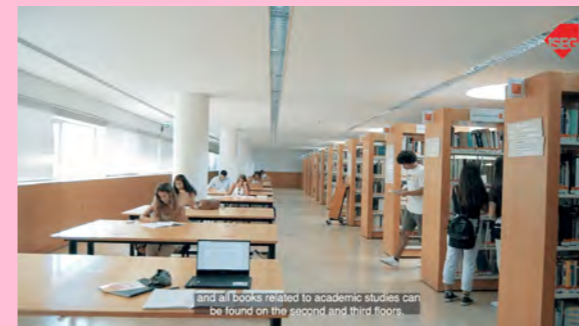
Career Services

ISEG Career Services provides you with information about job opportunities and those companies that best suit your professional goals, and also helps you define a career plan and prepare for recruitment processes.



IT Services

The IT Division (DSI) provides a service for all matters regarding technology and information systems, and is responsible for the management of all hardware, software, and networks.



Library

At Francisco Pereira de Moura library you will find the largest collection of academic works on economic and business sciences in Portugal.



Awards*

* Note: Subject to confirmation

With the support of various institutions and companies, every year ISEG awards prizes to those students who have achieved grades of excellence, both at the time of their initial application and also during their continual assessment.

Know more [here](#)

Dean's List

Finalists with the highest averages make the Dean's list each year.



Caixa Geral de Depósitos

Best student of the Bachelor's Degree in Economics, Finance, Management, Applied Mathematics for Economics and Management (taught in Portuguese), Management (taught in Portuguese), and Economics (taught in Portuguese).



Eduardo Catroga

Prize for the best undergraduate student at ISEG.



Explorer Investments Excellence

Award of 4 Erasmus Scholarships to ISEG undergraduate students who demonstrate special characteristics of initiative, motivation and commitment.

Bachelors



AEISEG Merit Award

Best 1st year student who has not been awarded any other award or scholarship.



Caixa + Mundo Caixa Geral de Depósitos

Recognition for the academic merit of students admitted through the national access competition and enrolled in higher education institutions.



EY Merit Award

Best Portuguese student at the end of the 1st year Bachelor's degree in Applied Mathematics for Economics and Management (MAEG).



Montepio Associação Mutualista Internship Award

Best student of the Bachelor's degree in Finance.

Awards*

Masters

* Note: Subject to confirmation

NEW!



Aeeconomics

Awarded to the best 1st year student of the Masters in Monetary and Financial Economics, and Marketing.



Caixa Geral de Depósitos

Best student of the Masters in Innovation and Research for Sustainability.



Grupo Finantia

Best student of the Master in International Economics and European Studies.



Jerónimo Martins Group

Best 1st year student of the Masters in Data Analytics for Business, and Management Information Systems.



Jornal Económico

Awarded to the best student in the “Derivatives” curricular unit of the Master in Finance.



PSE Award

Awarded to the best students in the “Spatial Econometrics” curricular unit of the Master in Applied Econometrics and Forecasting.



IAPMEI

Best student of the Master in Industrial Strategy and Management.



Montepio Mutualist Association

Best student of the Master in Finance.



Deloitte

Best 1st year student of the Masters in Mathematical Finance, and CFFE.



Talent Formula

Students in the 2nd year of the Master in GRH with an average of 15 or above who wish to develop their final master’s work on a topic related to HR management in SMEs may apply.



EY

Best Portuguese student of the Masters in CFFE, Actuarial Sciences, and Data Analytics for Business.



PWC

Best 1st year student of the Masters in Economics, and MQDEE.



KPMG

Best student of the Master in Accounting.

NEW!



World Surf League

Awarded to the best 1st year student of the Masters in Business Sciences, and MiM.



Scholarships*

* Note: Subject to confirmation



KPMG Excellence

Economic Foundation Scholarship

Undergraduate degrees in Economics, Management, and Finance, with an average equal to or greater than 17.50, who choose ISEG as their 1st option. Undergraduate degree in Applied Mathematics for Economics and Management with an average equal to or greater than 18.50, who choose ISEG as their 1st option.

→ Scholarships for the 10 students with the best grade of application to ISEG.



Santander Future

Merit Scholarships

Undergraduate degrees in Economics, Management, and Finance, with an average equal to or greater than 17.50, who choose ISEG as their 1st option. Undergraduate degree in Applied Mathematics for Economics and Management with an average equal to or greater than 18.50, who choose ISEG as their 1st option.

→ Scholarships for 40 students who meet the criterion of merit scholarships, supported by Santander, through Santander Future Scholarships.

ISEG Merit Scholarships by Career Partners

Undergraduate degrees in Economics, Management, and Finance, with an average equal to or greater than 17.50, who choose ISEG as their 1st option. Undergraduate degree in Applied Mathematics for Economics and Management with an average equal to or greater than 18.50, who choose ISEG as their 1st option.

→ Scholarships for 88 students who meet the criterion of merit scholarships, supported by Career Partners.



Rodrigo Guimarães Institute Scholarship

Undergraduate Scholarship for students who are enrolled in the degrees in Economics or Management of ISEG.



Luís Patrão Scholarships

Turismo de Portugal provides 10 scholarships for students pursuing Postgraduate, Master's, or MBA programmes. The total funding available is €500,000, aimed at Portuguese students under 35 years old who have achieved an average grade of 14 or higher. Plus, the scholarships also cover living expenses, (maximum of €60,000 per student), in Portugal or abroad.



Payment of Tuition Fees Students SAS Scholarships

The payment of tuition fees of Students who have applied for a scholarship to the Social Action Services (SAS) of the UL, will only take place after the final decision is made and, if the scholarship is granted, after the payment of it.



DGES Merit Scholarships

The Scholarships by Merit are awarded to students of higher education, of the 1st and 2nd cycle of studies, who obtain exceptional school performance, regardless of their income.

Otelinda and Carlos Silveira Merit Scholarships

Students who complete their Bachelor's degree and enroll in ISEG master's degrees. Awarded to the best student in Economics, Management, Finance, and MAEG.



Solidarity Economic Alumni

Through the Alumni Economic Solidarity Program, ISEG and the Alumni Económicas - Association of Former Students of ISEG will support students of the 1st cycle of ISEG who are proven to be in financial difficulties.

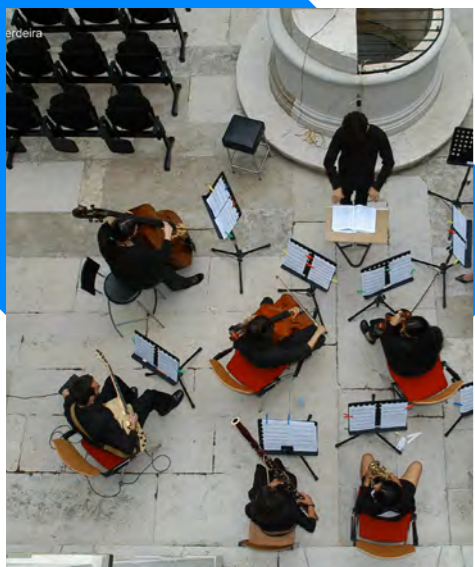


Scholarship of the José Neves Foundation

As part of this partnership, the master's, MBA and long-term executive training programs will be eligible for a Foundation scholarship for each student supporting the payment of tuition fees.



#lifeatiseg



Live the Culture

If you like to broaden your student life by getting involved in extracurricular activities, you need to be aware that ISEG organises a series of cultural activities over the year on Campus, especially in the Quelhas building (the old 'Inglesinhas' convent). This programme has no admission charge and includes musical performances, art exhibitions, book reviews, dance, theatre, cinema, and thematic debates, amongst others. The classical music concerts deserve a special mention, which are performed in partnership with prestigious institutions. Or you can even enrol in an art and design course, where you can learn to paint and draw and develop your artistic side.

Stay tuned to the ISEG Agenda of the Week on the website, in the Newsletter and in the School elevators.



Live the Alumni

The Alumni Económicas is the ex-students association of ISEG. Currently, it is the largest alumni association amongst the ULisboa Schools. The Alumni provides a way to dynamise the "ISEGian network" and to strengthen the relations of solidarity between former students and ISEG. This association promotes the continuous development of alumni by organising:

- The annual distinguished alumnus award
- Conferences and seminars dedicated to alumni
- The Alumni Day
- Degree anniversary reunions
- The Mentoring Programme

When you finish your degree, don't forget to be part of this elite group and to become a member.

For further information visit the website iseg.ulisboa.pt, or send us an e-mail to: aaa@iseg.ulisboa.pt



Live the Erasmus

Would you like to have an international experience? Live and study for a while abroad? Then we invite you to know the Erasmus program! Erasmus is a unique opportunity to experience other realities, learn about other cultures, learn new languages, travel, make new friends. Deep down enrich your life with this unforgettable experience. At ISEG you have access to several international mobility programs and you can study at one of 180 colleges in over 50 countries worldwide.

For more information visit our page on the ISEG website or email us at: imo@iseg.ulisboa.pt



Live the Sports

At ISEG we believe that playing sport should go hand in hand with a healthy life and in parallel with studies. If you love sport and like to keep fit, then all you have to do is become a member of the Student Association to be eligible to play any sport that AISEG has to offer. ISEG students also have access to the University of Lisbon excellent sports facilities at Estádio Universitário de Lisboa.

For further information about sport at ISEG, contact AE: geral@aiseg.pt

Save the Date



At ISEG we often say that we have more events than days a year. If you want to enrich your academic life with extracurricular activities and cultural events, we advise you to keep an eye on our events page. This is where all the initiatives taking place at ISEG are published on a daily basis.

Note: All event dates are subject to confirmation. You should always check the ISEG events page here or keep an eye on our social networks.

It's time to expand your world. These are some of the activities you shouldn't miss:

Welcome Days & Welcome Party

SEP 2nd to 6th 2024

A week of activities to welcome new undergraduates, masters and doctoral students and international students on mobility and/or exchange programs. It ends with the Welcome Party, on September 6th, to celebrate the start of the academic year with the whole community.



Click to watch last year's video

ISEG Leadership Bootcamp

SEP 21st 2024

This event is dedicated exclusively to master's students, so that they can develop leadership, communication and negotiation skills, which are fundamental for the job market, in a dynamic and inspiring environment.



Click to watch the video of the last edition

ISEG Career Forum

NOV 6th & 7th 2024

ISEG's biggest event, welcoming more than 100 national and international companies interested in attracting new talent from ISEG. It puts our students in touch with companies for spontaneous applications and quick interviews. Last year, 250 students were recruited.



Click to watch last year's video

Save the Date

See the events page [here](#)

Solemn Session of the Academic Year 2024/2025

NOV 21st 2024

A solemn session that formally marks the start of the academic year, where an ISEG lecturer delivers a Lesson of Wisdom and the best students of the previous academic year are honored with academic merit diplomas and awards sponsored by companies.



ISEG Day 114th Anniversary

MAY 23rd 2025

The day when the ISEG community comes together to celebrate its birthday. A *Arraial* (street party) with food, drink, music, and games where everyone is invited to join in and dance.



Click to watch this year's video

Gordão

MAY 2025

Gordão is the party organized by the ISEG Student Association (AEISEG), one of the biggest university events in Lisbon, where beer is the queen of the party.



ISEG Research Seminars

Research seminars with the participation of lecturers from ISEG and other national and international schools, covering topics related to Economics, Management, Finance, Social Sciences and Mathematics.

Cycle of Seminars on Digital Marketing for the Masters in Marketing

Throughout the academic year, 4 seminars are organized on current topics in Digital Marketing, important for future professionals in the area, within the scope of the Master's in Marketing.

Exhibitions

In the corridors of 3rd floor of the Quelhas Building you can find exhibitions, usually of fine arts such as paintings. Explore these corridors from time to time for some nice surprises.

Antena 2 Concerts

Broadcast live on Antena 2 radio, directly from our Caixa Geral de Depósitos Auditorium (CGD). Usually held on Thursdays.

Apart from ISEG events, there are also events promoted by ISEG Research, which you can also check out on the page.

How to get to ISEG



BUS

706 / 727
Av. D. Carlos I
⌚ 1 minute

713 / 773
Rua Borges Carneiro
⌚ 5 minutes

714 / 760 / 774
Largo Conde Barão
⌚ 5 minutes

728
Av. 24 de Julho
⌚ 7 minutes



SUBWAY

Yellow Line
with exit at **Rato Station**
⌚ 15 minutes

Green Line
with exit at **Cais do Sodré Station**
⌚ 15 minutes



TRAM

28 / 25
Calçada da Estrela
⌚ 2 minutes

15 / 18
Av. 24 de Julho
⌚ 5 minutes



TRAIN

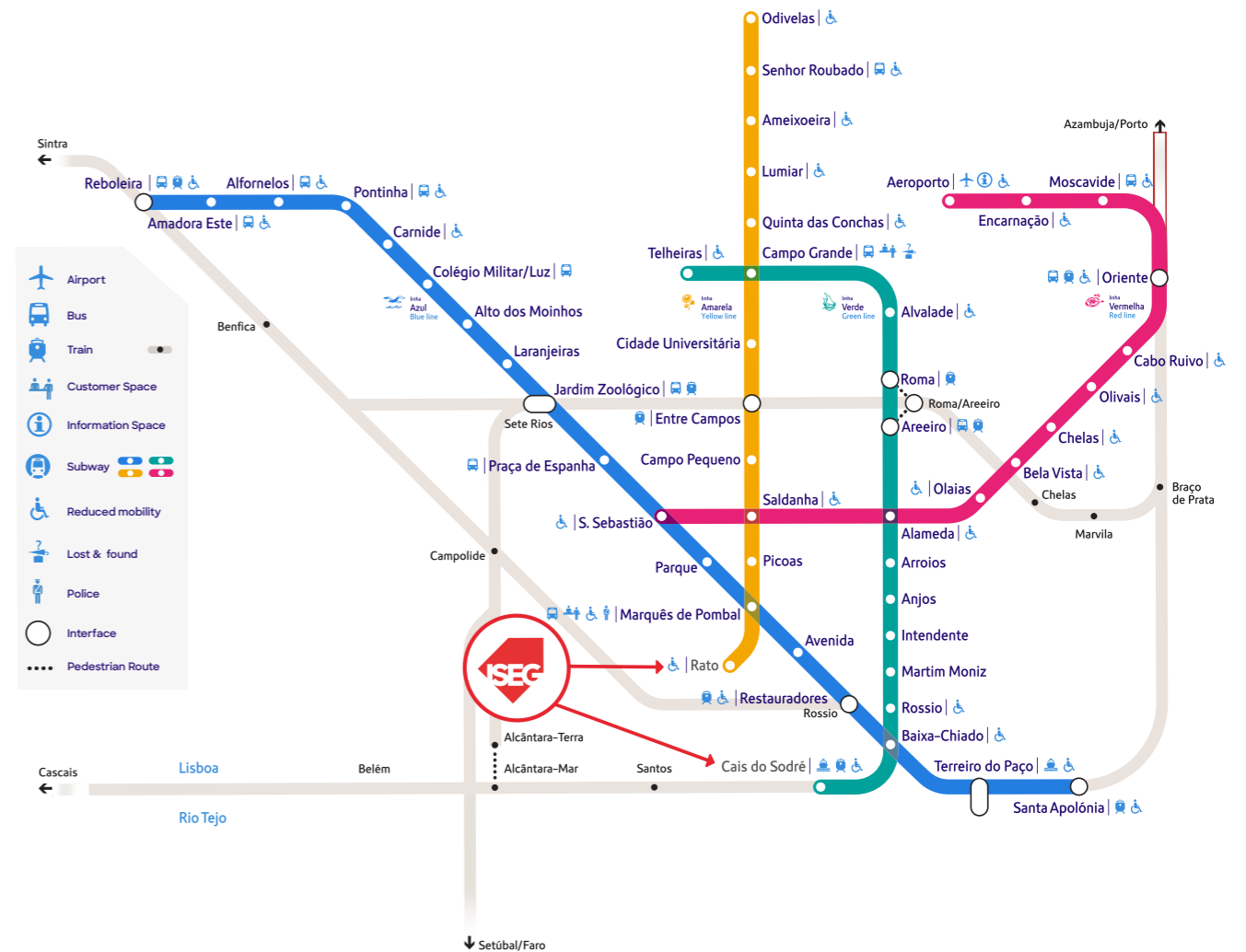
Cascais Line
with exit at **Santos Station**
⌚ 10 minutes



BOAT

Connection to buses, trams or by foot from the Terreiro do Paço
⌚ 20 minutes

Connection to buses, trams or by foot from the Cais do Sodré Station
⌚ 15 minutes



ISEG Campus

Francisco Pereira de Moura Library

The School has full wireless internet coverage (Eduroam) and also several computer labs which you can use freely. You will also be given an account on our Intranet – Fenix, where you can access all the updates regarding the course units for which you are enrolled, your school CV, updated grades, the calculation of your average grade and also ISEG job offers.



Canteen and Bars

ISEG has a large variety of eating facilities throughout the Campus, at accessible prices, with varied menus.



Internet

ISEG has a four-story building with a modern library with ample rooms for reading and study. It has the largest bibliographic collection in Portugal in the areas of Economics and Management. At no charge, you can also consult bibliographic databases and statistical information.

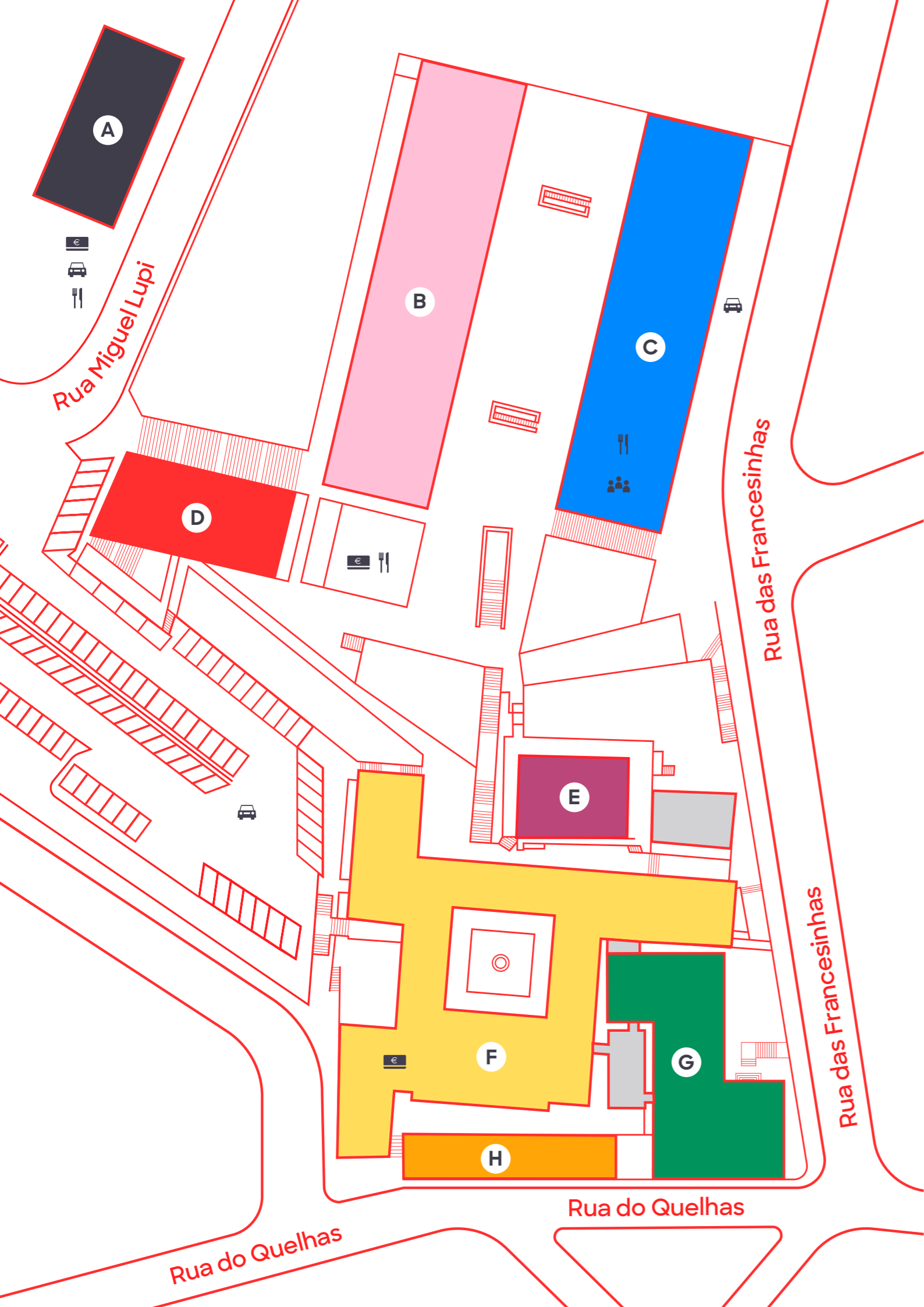
Around Campus



Click on the Google Maps icon to see the location



- | | | |
|--|--|---|
| Pingo Doce São Bento €
Rua Do Quelhas, 8
☎ 938 870 000 🚶 5 min. | Calmô Café €
Rua do Meio à Lapa 51A
🚶 7 min. | Mila Santos €€
Rua Santos-O-Velho 38
☎ 927 951 122 🚶 9 min. |
| Local - Healthy Kitchen €€
Av. 24 de Julho, 54 B
☎ 213 900 072 🚶 7 min. | El Cabron -Tacos & Tequilla €€
Largo Santos, 5
☎ 966 785 574 🚶 7 min. | Frade dos Mares €€€
Av. Dom Carlos I, 55 A
☎ 213 909 418 🚶 4 min. |
| McDonald's €
Av. Dom Carlos I, 17-25
☎ 213 958 691 🚶 6 min. | Pizzaria Luzzo €€
Calç. Marquês Abrantes, 15D
☎ 213 900 045 🚶 5 min. | La Tagliatella €€
Av. Dom Carlos I, 42
☎ 210 502 016 🚶 5 min. |
| Le Chat €€
Jardim 9 de Abril
☎ 213 963 668 🚶 17 min. | Heim Café - Brunch €€
Rua Santos-O-Velho, 2e4
☎ 935 775 833 🚶 7 min. | Marco - Rest. & Cervejaria €€
Largo Santos, 14 D
☎ 213 950 966 🚶 7 min. |
| Casa Santi - Pizzeria €€
Largo de Santos, 14 A
☎ 911 819 644 🚶 8 min. | A Merendeira €
Av. 24 de Julho, 54
☎ 218 058 551 🚶 7 min. | Gelato Davvero €
Av. Dom Carlos I, 39
☎ 216 053 054 🚶 5 min. |
| Gelateria Nannarella €
R. Nova da Piedade, 64 A
☎ 926 878 553 🚶 7 min. | Fauna & Flora €€
Rua da Esperança, 33
☎ 961 645 040 🚶 4 min. | Hamburgueria do Bairro €€
Rua dos Industriais, 9
☎ 213 960 405 🚶 1 min. |
| El Rey D. Carlos €
Av. Dom Carlos I, 124 E
☎ 213 905 658 🚶 2 min. | A Loja do Sr. Rocha €
Calçada da Estrela, 68
☎ 912 625 965 🚶 7 min. | Origem - Cozinha Saudável €
R. do Instituto Industrial 7A
☎ 912491571 🚶 9 min. |
| Café Joyeux €€
Calçada da Estrela, 26
☎ 961 056 550 🚶 2 min. | O Tachadas €
Rua da Esperança, 178
☎ 213 976 689 🚶 6 min. | Taberna da Esperança €€
Rua da Esperança, 112
☎ 925 059 289 🚶 5 min. |



ISEG Campus

A Bento de Jesus Caraça

- Reception
- IT Department
- Faculty Offices
- Meeting Rooms
- Research Centres
- Photocopy Centre
- Underground Car Park
- Restaurant

E New Quelhas

- Auditoriums
- Lecture Rooms
- Terrace

B Francesinhas 1

- Reception
- Undergraduate Office
- Mobility of Students
- Lecture Theatres
- Lecture Rooms
- Study Areas
- Meeting Rooms

F Quelhas 6

- Reception
- Dean's Office
- Postgraduation Office
- ISEG Executive Education
- Marketing & External Relations
- Auditoriums
- Lecture Rooms
- Faculty Offices
- Departmental Offices

C Francesinhas 2

- Lecture Theatres
- Career Management
- Lecture Rooms
- Computer Labs
- Study Areas
- Meeting Rooms
- Student Association
- Canteen
- Bookshop
- Underground Car Park
- Photocopy Centre

G Quelhas 2

- Alumni Association
- Economics Foundation
- Doctor's Rooms
- Faculty Offices
- Research Centres
- Logistics and Technical Support
- Human Resources
- Finance Department
- Accounts Department

D Library

- Reception
- Study Areas
- Reading Rooms
- EU Documentation Centre

H Quelhas 4

- Faculty Offices
- Restaurants

ATM
 Canteen/Bar
 Living Room
 Car Park

ISEG Facts & Numbers

113

Years of Excellence
The first portuguese school of economics and management

#1

It is part of Universidade de Lisboa - the no. 1 University in Portugal

Top 1%

ISEG is a “triple crown” school, as it holds AMBA, AACSB, and EQUIS accreditations, a feat that less than 1% of business schools worldwide can boast

Top 30 & Top 25
in the world in Europe

Masters in Finance
Among the best Masters in Finance in the world



+7.000

Students

+20%

International students

70

Nationalities

+230

Faculty members

+150

Exchange agreements with foreign universities

+30

Awards for best students

#1

Largest Alumni Network in Economics and Management for a Portuguese school

#1

The Bachelors in MAEG had the highest entry GPA in Economics and Management in the country in 2022: 18,25

+50.000

Job opportunities

22

Masters in Economics, Management and Mathematics

+98%

Average employability in all undergraduates' courses

13

Masters fully taught in English

9

Masters fully taught in Portuguese

13

Masters programmes in Best Masters Global Ranking including Financial Times and Eduniversal

+190

Doctoral graduates integrated into ISEG Research – the largest research unit in the field of Economics and Management in Portugal

Technology

ISEG provides access to various digital platforms for the most varied of purposes:

- Fenix**
 Where you can consult not only your academic path, but also the material made available by each subject's faculty.
- Outlook**
 Where you receive and send e-mails, as well as newsletters and other important information from the various ISEG offices.
- Office 365**
 Here you can access all Microsoft applications on one single platform: PowerPoint, Word, Outlook, Excel...
- Microsoft Teams**
 The platform used for online lectures.

To access all these platforms, all you need to do is memorise your **Username** and **Password**!

Username:
YourStudentNumber@aln.isseg.ulisboa.pt

Password:
The same password that you use to access Fenix

Contacts

Any question?
Please, contact us!

ACADEMIC SERVICES

Public attendance has the following opening hours:

Personal attendance without appointment:
Monday to friday, 10:00 am - 12:00 am

Personal attendance by appointment*:
Monday to friday, 2:00 pm - 4:00 pm

* The scheduling request must be made 24 hours in advance and subject to availability of agenda, indicating the reason, preference for the date and time and in the subject put "Scheduling in person attendance", through the following emails:

Undergraduate students:
seclic@iseg.ulisboa.pt

Master and PhD students:
smd@iseg.ulisboa.pt

International Mobility:
imo@iseg.ulisboa.pt

Contact phone: 213 925 900
Monday to friday, 2:00 pm - 4:00 pm

The preferred means of contact is the email.

- International Mobility**
 imo@iseg.ulisboa.pt
 (+351) 213 922 737
- Student Support Office**
 gaa@iseg.ulisboa.pt
 213 925 800
- OMBUDSMAN**
 provedoria-aluno@iseg.ulisboa.pt
 213 922 730
- Marketing Office**
 marketing@iseg.ulisboa.pt
 213 925 813
- Career Services**
 careers@iseg.ulisboa.pt
 213 925 896/7

**OPEN
MINDS.
GRAB THE
FUTURE.**





**Lisbon School
of Economics
& Management**
Universidade de Lisboa



UNIVERSIDADE
DE LISBOA

**OPEN
MINDS.
GRAB
THE FUTURE.**

www.iseg.ulisboa.pt
smd@iseg.ulisboa.pt
(+351) 213 925 900

ISEG
Rua das Francesinhas
1200-675 Lisboa · Portugal

World Ranked Triple Accredited:



Rankings:



Memberships:



Other Accreditations and Partnerships:

